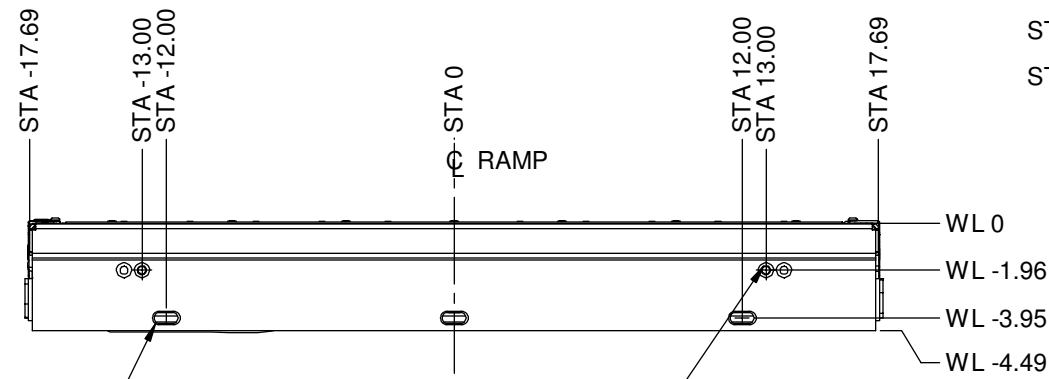


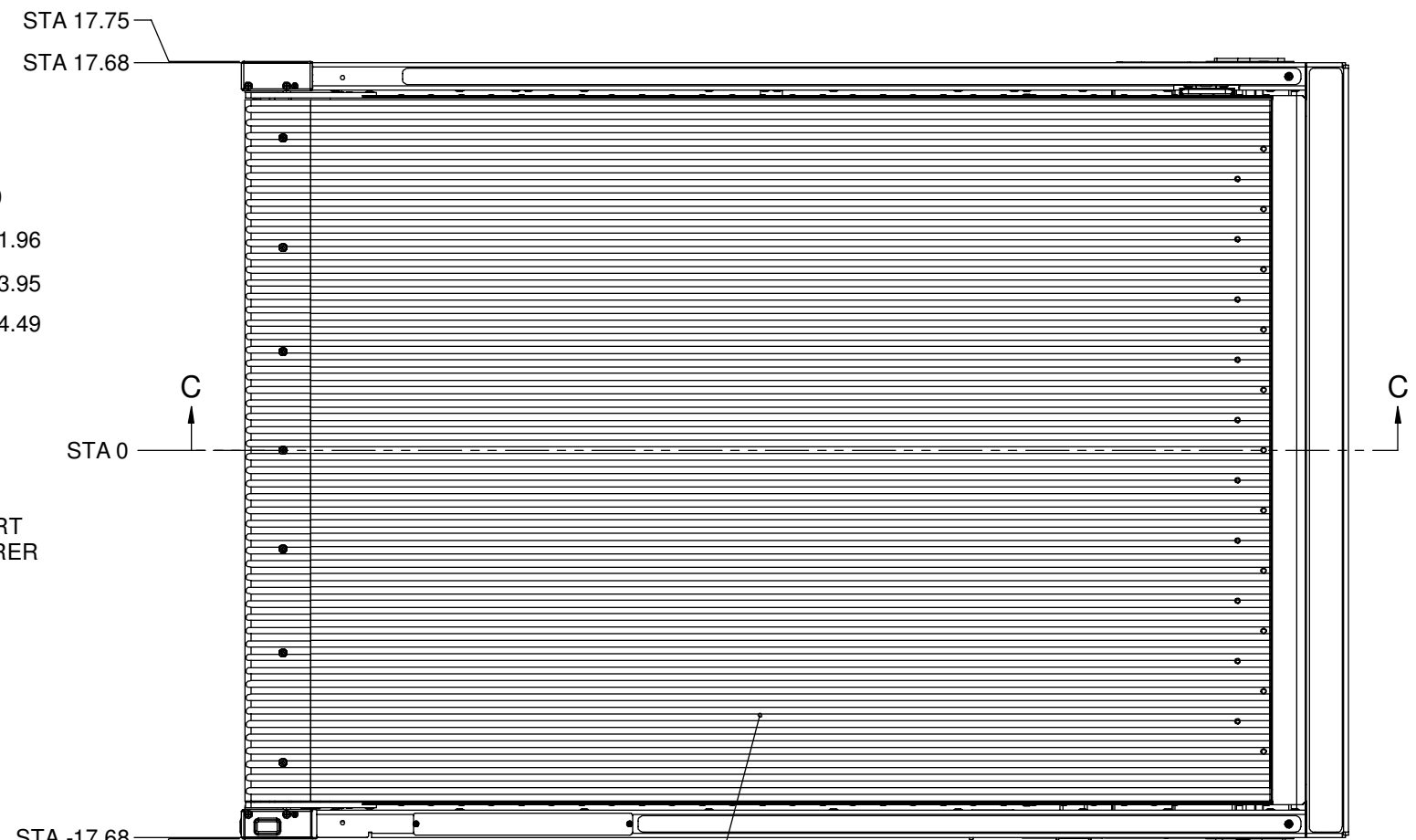
REVISIONS									
LTR	ECO	APPD	DATE	DESCRIPTION	DFTR	DATE	CHKR	DATE	
C				CHGD SECTION VIEW B-B & ADDED DIMS	SG	3/29/2005			



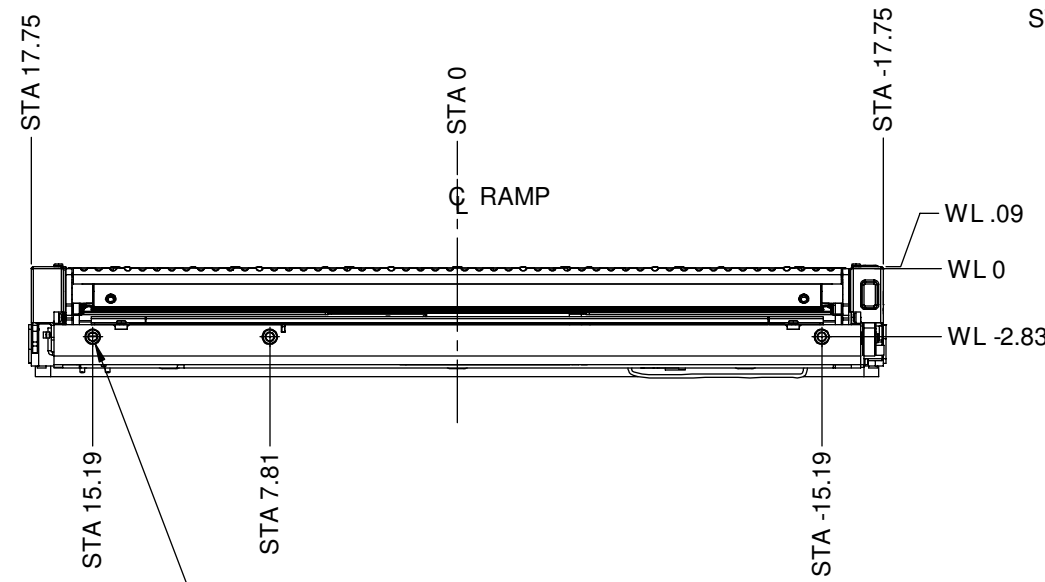
VIEW A-A

3x SLOT .438 x 1.00 FOR PERMANENT ATTACHMENT TO ROADSIDE VEHICLE MEMBER. VEHICLE MANUFACTURER TO PROVIDE VERTICAL ADJUSTMENT. SEE NOTE 2.

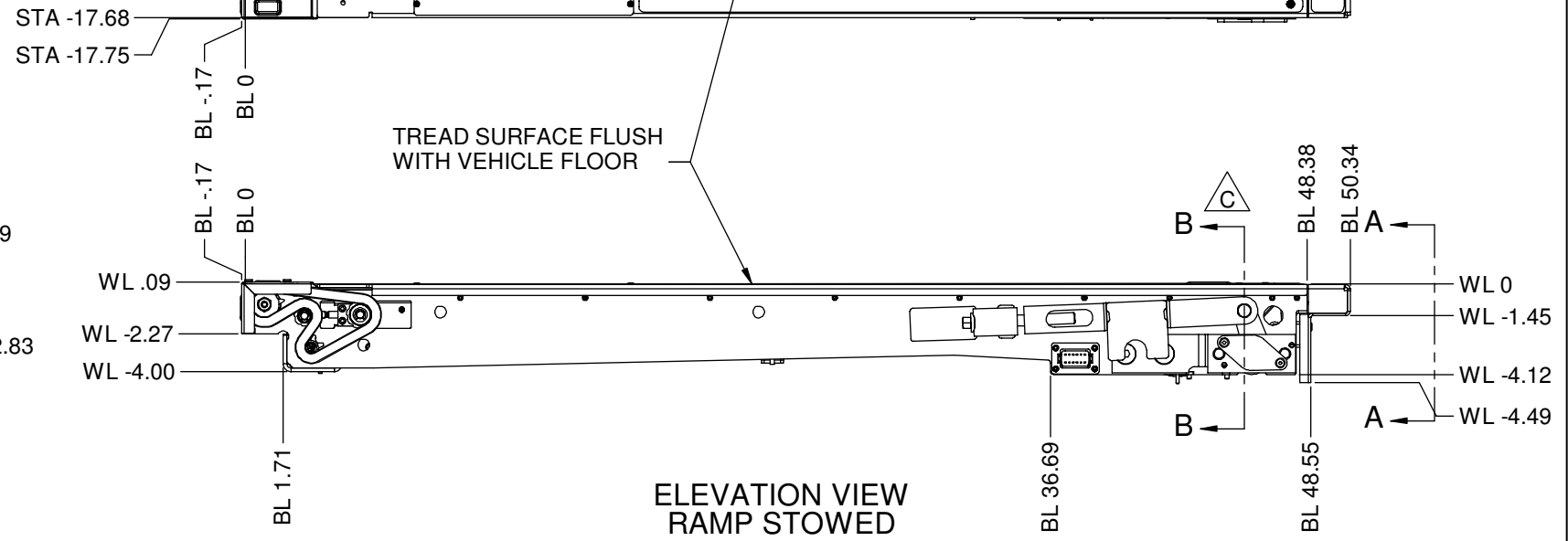
TWO CAPSCREWS FASTEN RAMP ASSEMBLY TO ROADSIDE SUPPORT CLOSEOUT. VEHICLE MANUFACTURER TO PROVIDE CLEARANCE IN ROADSIDE VEHICLE MEMBER. SEE NOTE 1 AND 2.



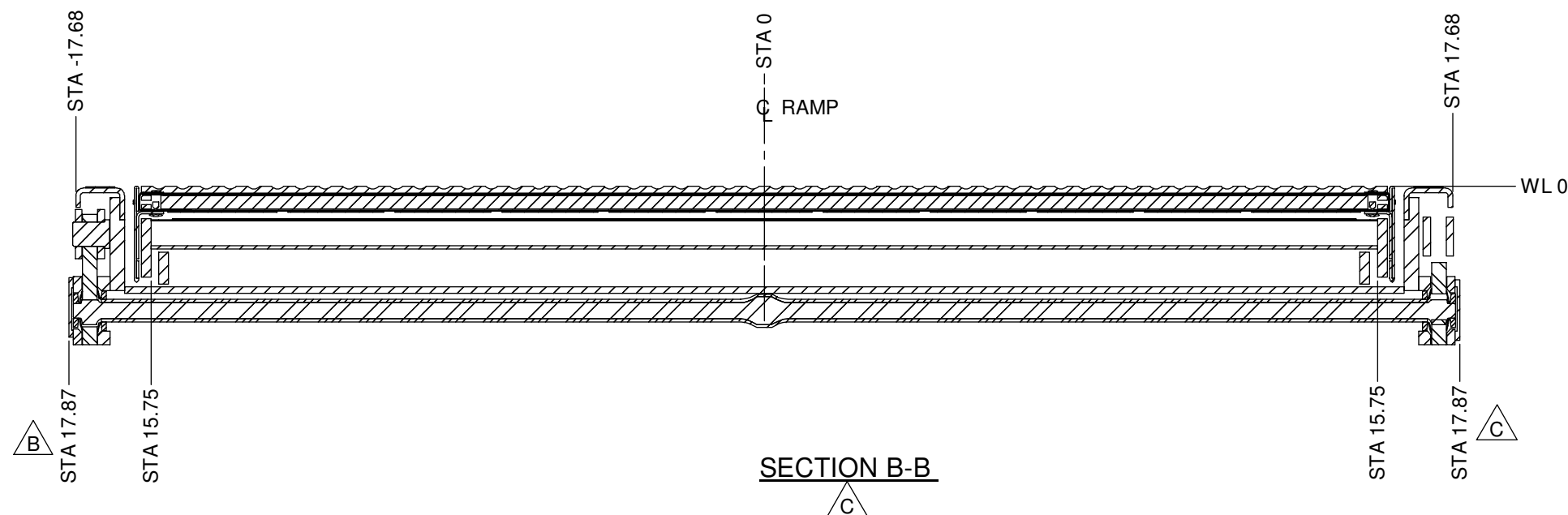
ELEVATION VIEW RAMP STOWED



3x 3/8-24 TAPPED HOLES FOR ATTACHMENT TO CURBSIDE VEHICLE MEMBER. VEHICLE MANUFACTURER TO PROVIDE FOR VERTICAL AND HORIZONTAL ADJUSTMENTS.

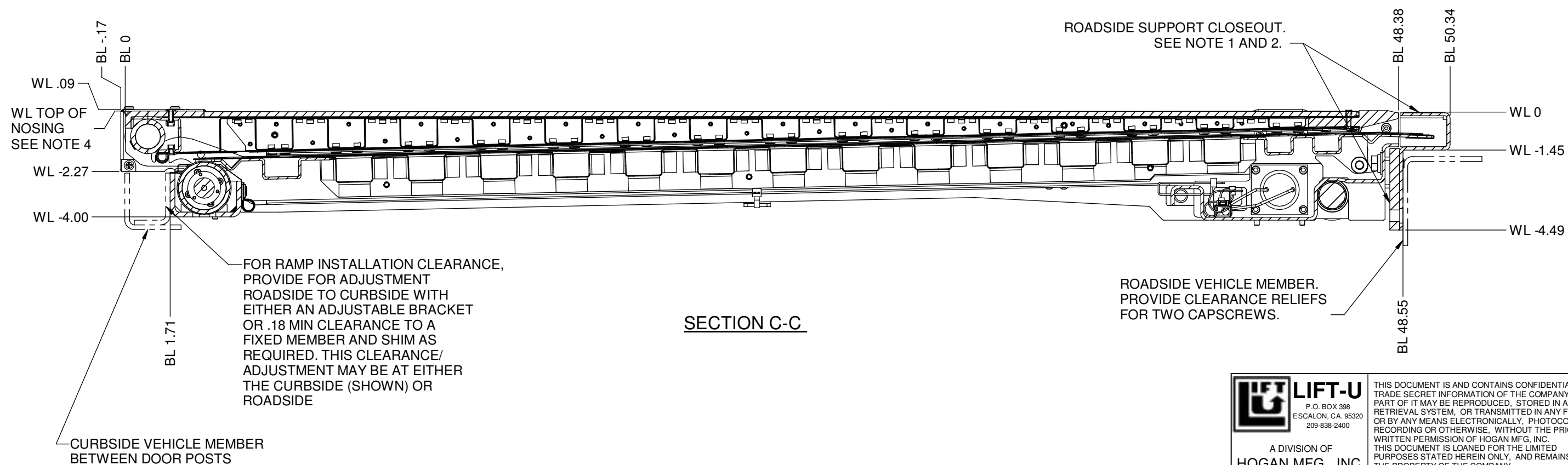


 LIFT-U P.O. BOX 398 ESCALON, CA, 95320 209-838-2400	THIS DOCUMENT IS AND CONTAINS CONFIDENTIAL TRADE SECRET INFORMATION OF THE COMPANY. NO PART OF IT MAY BE REPRODUCED, STORED IN A RETRIEVAL SYSTEM, OR TRANSMITTED IN ANY FORM OR BY ANY MEANS ELECTRONICALLY, PHOTOCOPIING, RECORDING OR OTHERWISE, WITHOUT THE PRIOR WRITTEN PERMISSION OF HOGAN MFG, INC. THIS DOCUMENT IS LOANED FOR THE LIMITED PURPOSES STATED HEREIN ONLY, AND REMAINS THE PROPERTY OF THE COMPANY.	
	A DIVISION OF HOGAN MFG., INC.	
TITLE RAMP OPERATION/ENVELOPE		
DOCUMENT NO. 726-0004	SHEET NO. 1 OF 4	REVISION C



NOTES:

1. THE ROADSIDE SUPPORT CLOSEOUT IS FASTENED TO THE RAMP ASSEMBLY WITH TWO CAPSCREWS AT THE FACTORY.
2. THE ROADSIDE SUPPORT CLOSEOUT SHIPS ASSEMBLED TO THE RAMP. AT INSTALLATION THE ROADSIDE SUPPORT CLOSEOUT IS BOLTED TO THE ROADSIDE VEHICLE MEMBER AFTER THE RAMP ASSEMBLY HAS BEEN ADJUSTED FLUSH WITH THE VEHICLE FLOOR. VEHICLE MANUFACTURER TO PROVIDE VERTICAL ADJUSTMENT IN THE ROADSIDE VEHICLE MEMBER, AND VERTICAL AND HORIZONTAL ADJUSTMENT IN THE CURBSIDE VEHICLE MEMBER.
3. ONLY SIX FASTENERS NEED TO BE HANDLED FOR SUBSEQUENT REMOVAL AND REINSTALLATION OF THE RAMP ASSEMBLY. THREE CAPSCREWS EACH CURBSIDE AND ROADSIDE.
4. TOP OF "RCA" NOSING IS WL .03.
TOP OF "ALTRO" NOSING IS WL 0.



LIFT-U
P.O. BOX 398
ESCALON, CA, 95320
209-838-2400

THIS DOCUMENT IS AND CONTAINS CONFIDENTIAL TRADE SECRET INFORMATION OF THE COMPANY. NO PART OF IT MAY BE REPRODUCED, STORED IN A RETRIEVAL SYSTEM, OR TRANSMITTED IN ANY FORM OR BY ANY MEANS ELECTRONICALLY, PHOTOCOPIING, RECORDING OR OTHERWISE, WITHOUT THE PRIOR WRITTEN PERMISSION OF HOGAN MFG., INC. THIS DOCUMENT IS LOANED FOR THE LIMITED PURPOSES STATED HEREIN ONLY, AND REMAINS THE PROPERTY OF THE COMPANY.

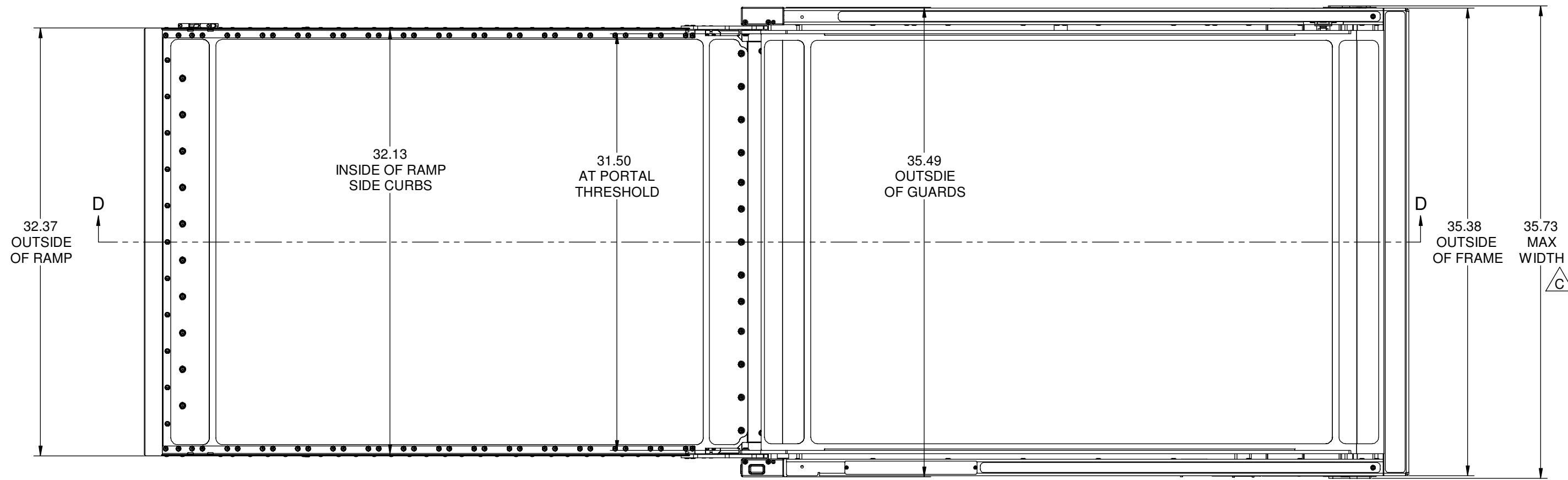
A DIVISION OF
HOGAN MFG., INC.

TITLE **RAMP OPERATION/ENVELOPE**

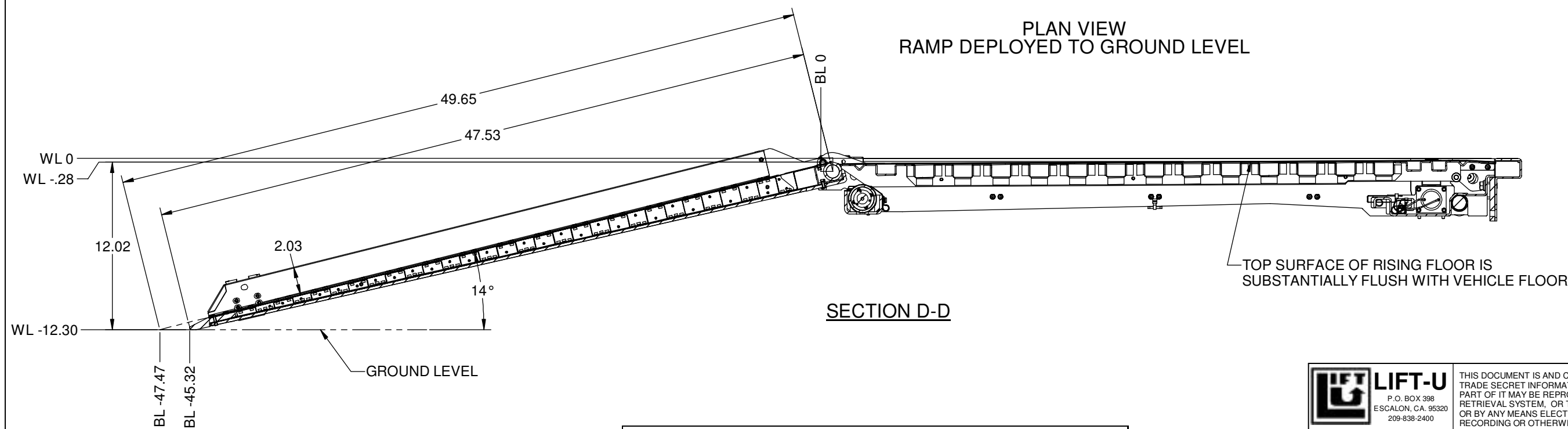
DOCUMENT NO. **726-0004**

SHEET NO. **2 OF 4**

REVISION **C**



PLAN VIEW
RAMP DEPLOYED TO GROUND LEVEL



SECTION D-D

TOP SURFACE OF RISING FLOOR IS
SUBSTANTIALLY FLUSH WITH VEHICLE FLOOR

ADA RAMP SLOPE REQUIREMENTS FOR 12" STEP HEIGHT TO GROUND:		
STEP HT ABOVE 6" CURB	MAXIMUM RAMP SLOPE	MINIMUM RAMP LENGTH
> 3" TO 6"	1:6 (9.462 DEG.)	36.497"
> 6" TO 9"	1:8 (7.125 DEG.)	48.373"
MAX SLOPE TO GROUND	1:4 (14.036 DEG.)	49.477"



A DIVISION OF
HOGAN MFG., INC.

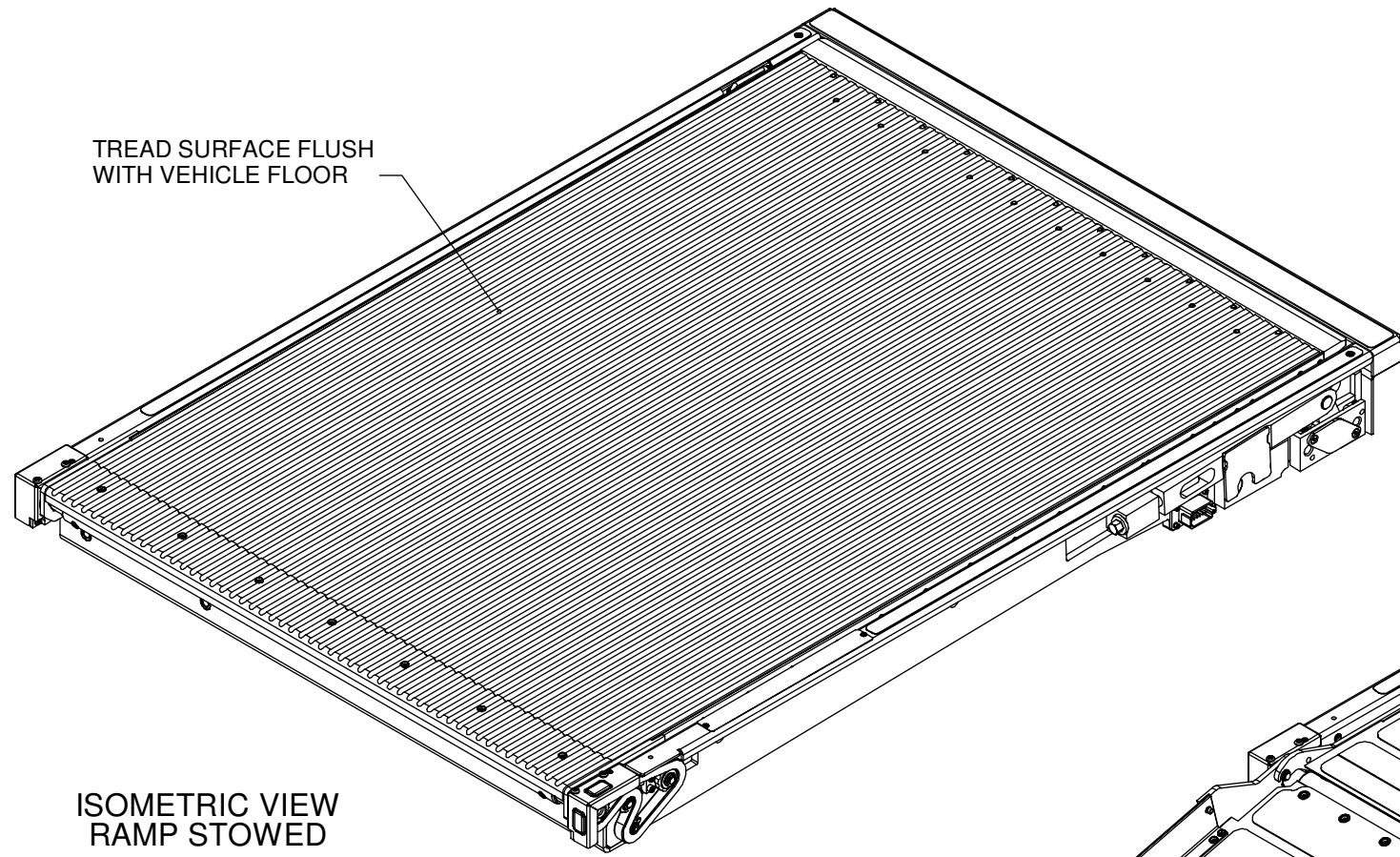
THIS DOCUMENT IS AND CONTAINS CONFIDENTIAL TRADE SECRET INFORMATION OF THE COMPANY. NO PART OF IT MAY BE REPRODUCED, STORED IN A RETRIEVAL SYSTEM, OR TRANSMITTED IN ANY FORM OR BY ANY MEANS ELECTRONICALLY, PHOTOCOPIING, RECORDING OR OTHERWISE, WITHOUT THE PRIOR WRITTEN PERMISSION OF HOGAN MFG, INC. THIS DOCUMENT IS LOANED FOR THE LIMITED PURPOSES STATED HEREIN ONLY, AND REMAINS THE PROPERTY OF THE COMPANY.

TITLE RAMP OPERATION/ENVELOPE

DOCUMENT NO. 726-0004

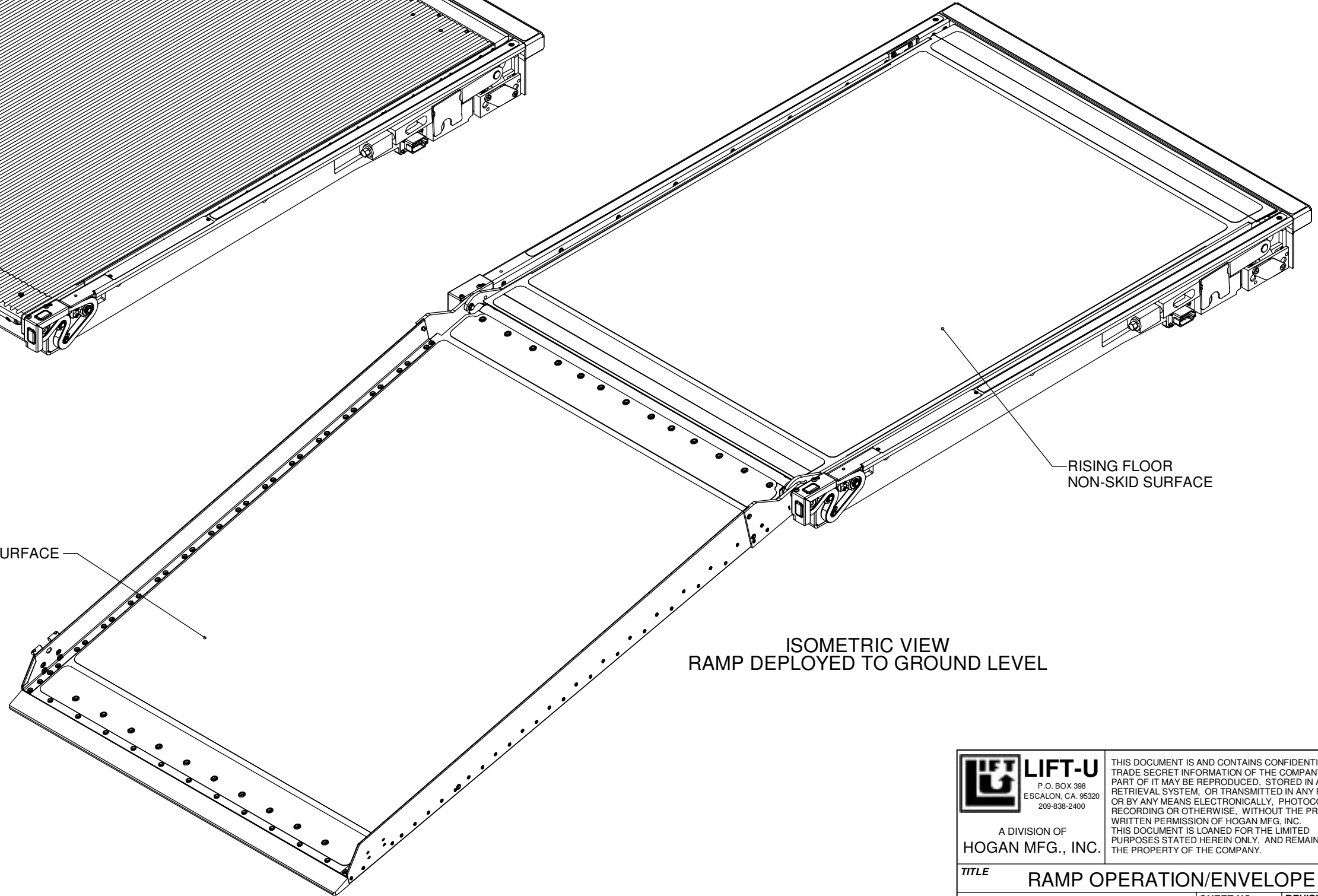
SHEET NO. 3 OF 4

REVISION C



TREAD SURFACE FLUSH WITH VEHICLE FLOOR

ISOMETRIC VIEW RAMP STOWED



RAMP NON-SKID SURFACE

RISING FLOOR NON-SKID SURFACE

ISOMETRIC VIEW RAMP DEPLOYED TO GROUND LEVEL



LIFT-U
 P.O. BOX 398
 ESCALON, CA, 95320
 209-838-2400

THIS DOCUMENT IS AND CONTAINS CONFIDENTIAL TRADE SECRET INFORMATION OF THE COMPANY. NO PART OF IT MAY BE REPRODUCED, STORED IN A RETRIEVAL SYSTEM, OR TRANSMITTED IN ANY FORM OR BY ANY MEANS ELECTRONICALLY, PHOTOCOPIING, RECORDING OR OTHERWISE, WITHOUT THE PRIOR WRITTEN PERMISSION OF HOGAN MFG., INC. THIS DOCUMENT IS LOANED FOR THE LIMITED PURPOSES STATED HEREIN ONLY, AND REMAINS THE PROPERTY OF THE COMPANY.

A DIVISION OF
HOGAN MFG., INC.

TITLE		RAMP OPERATION/ENVELOPE	
DOCUMENT NO.	726-0004	SHEET NO.	4 OF 4
		REVISION	C