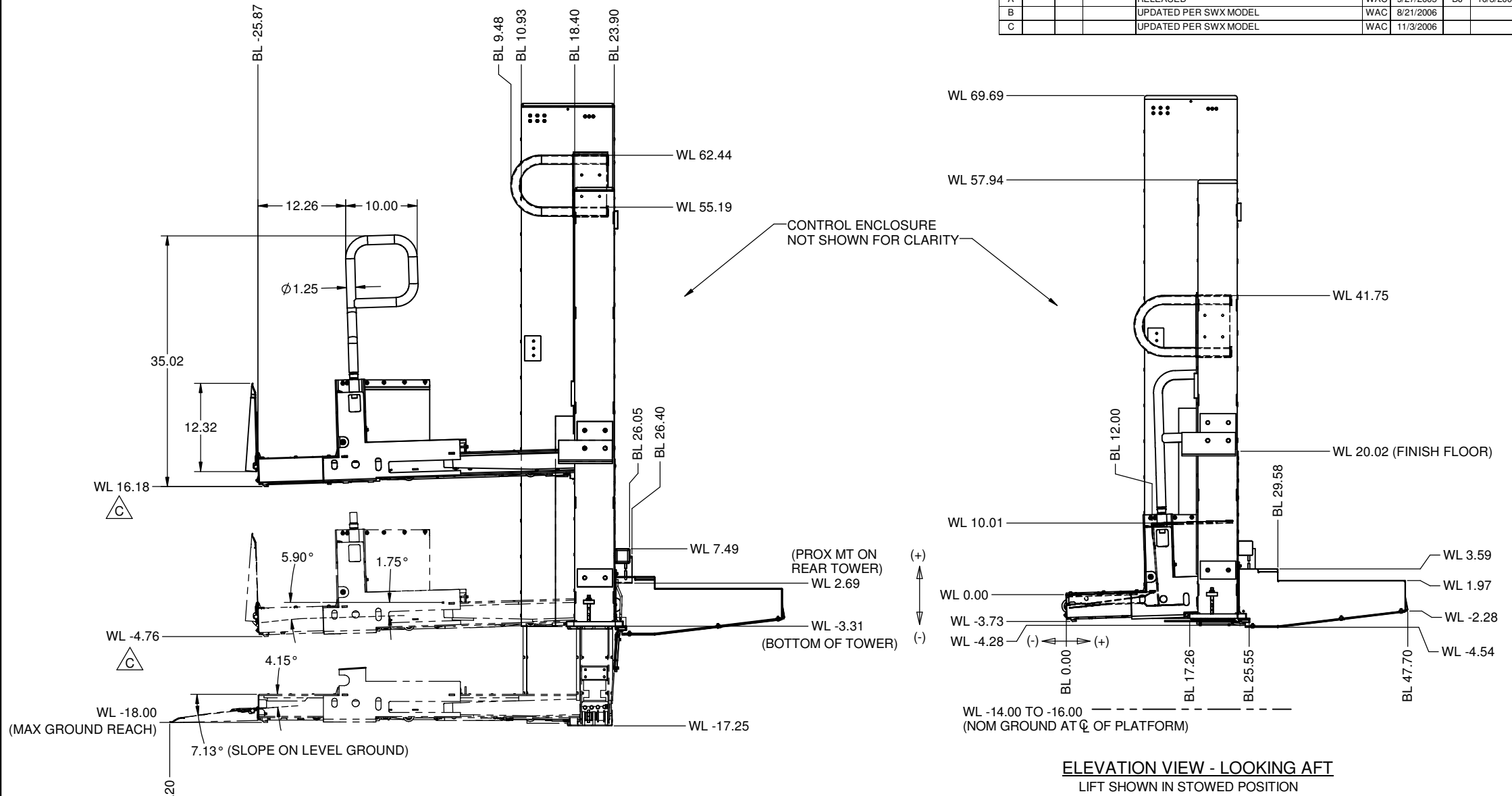


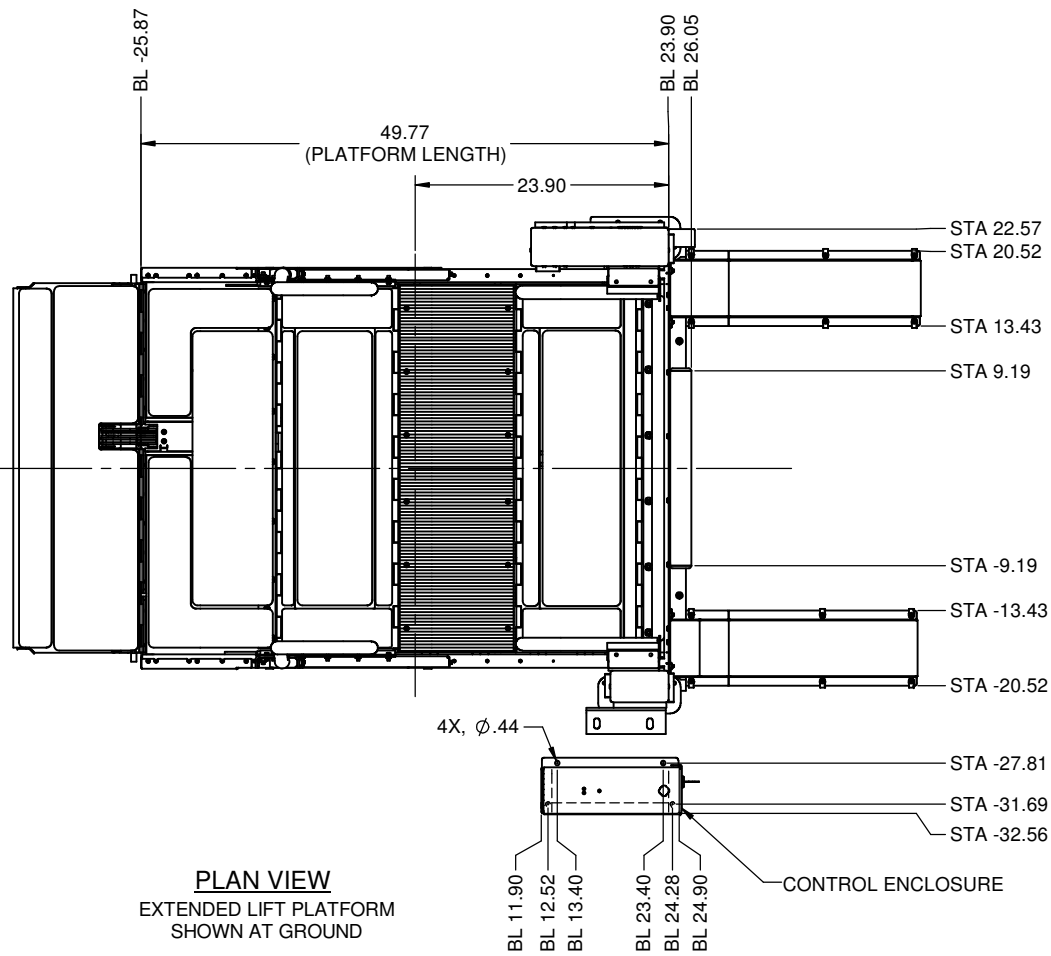
REVISIONS										
LTR	ECO	APPD	DATE	DESCRIPTION	DFTR	DATE	CHKR	DATE		
A				RELEASED	WAC	9/27/2005	DJ	10/3/2005		
B				UPDATED PER SWX MODEL	WAC	8/21/2006				
C				UPDATED PER SWX MODEL	WAC	11/3/2006				



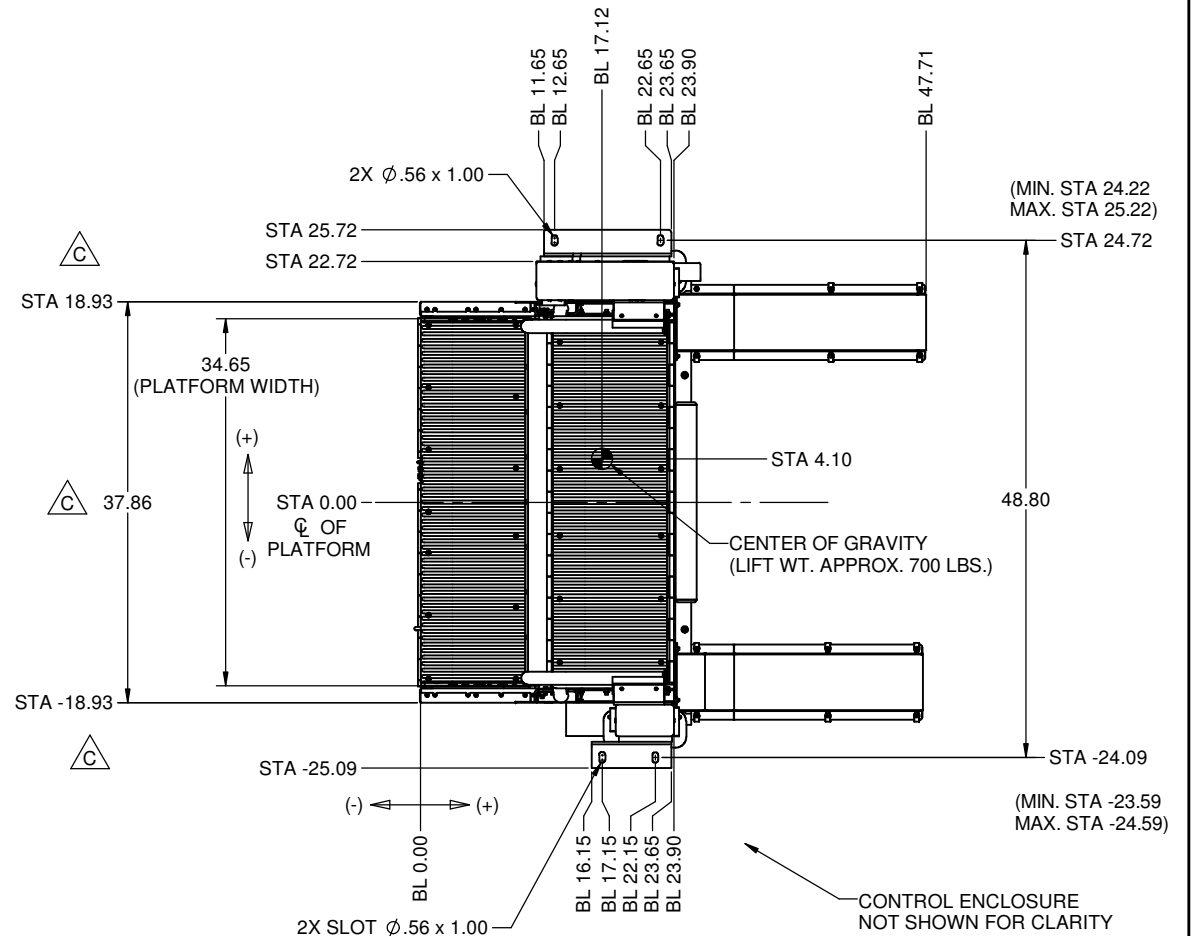
ELEVATION VIEW - LOOKING AFT
EXTENDED LIFT PLATFORM SHOWN AT FLOOR LEVEL,
DEPLOYED LEVEL AND MAX. GROUND REACH POSITION.

ELEVATION VIEW - LOOKING AFT
LIFT SHOWN IN STOWED POSITION

UNLESS OTHERWISE SPECIFIED:		COATING / FINISH	
<ul style="list-style-type: none"> - INTERPRET DRAWING PER ANSI Y14.5-1982. - DIMENSIONS ARE IN INCHES. - FINISH ALL PROCESSED SURFACES TO 125 RMS MAX. - DIMENSIONS APPLY TO FINISHED PART, BEFORE PAINTING. - DEBURR ALL SURFACES AND BREAK ALL EDGES .015 x 45°. - TOLERANCES (+ OR -): 		DESC: NONE SPEC: NONE FIRST USE REFERENCE: LU12-19	
DECIMAL: FRACTION: 1/16 .XX = .03 .XXX = .010 .XXXX = .0005 ANGLE: 1/2 DEGREE		SCALE: 1:7 WEIGHT: (LBS.)	
		LIFT-U P.O. BOX 398 ESCALON, CA. 95320 209-838-2400 A DIVISION OF HOGAN MFG., INC. TITLE: LIFT OPERATION/ENVELOPE	
		THIS DOCUMENT IS AND CONTAINS CONFIDENTIAL TRADE SECRET INFORMATION OF THE COMPANY. NO PART OF IT MAY BE REPRODUCED, STORED IN A RETRIEVAL SYSTEM, OR TRANSMITTED IN ANY FORM OR BY ANY MEANS ELECTRONICALLY, PHOTOCOPIING, RECORDING OR OTHERWISE, WITHOUT THE PRIOR WRITTEN PERMISSION OF HOGAN MFG, INC. THIS DOCUMENT IS LOANED FOR THE LIMITED PURPOSES STATED HEREIN ONLY, AND REMAINS THE PROPERTY OF THE COMPANY.	
		DOCUMENT NO. 700-0019	SHEET NO. 1 OF 3
		REVISION C	



PLAN VIEW
EXTENDED LIFT PLATFORM
SHOWN AT GROUND



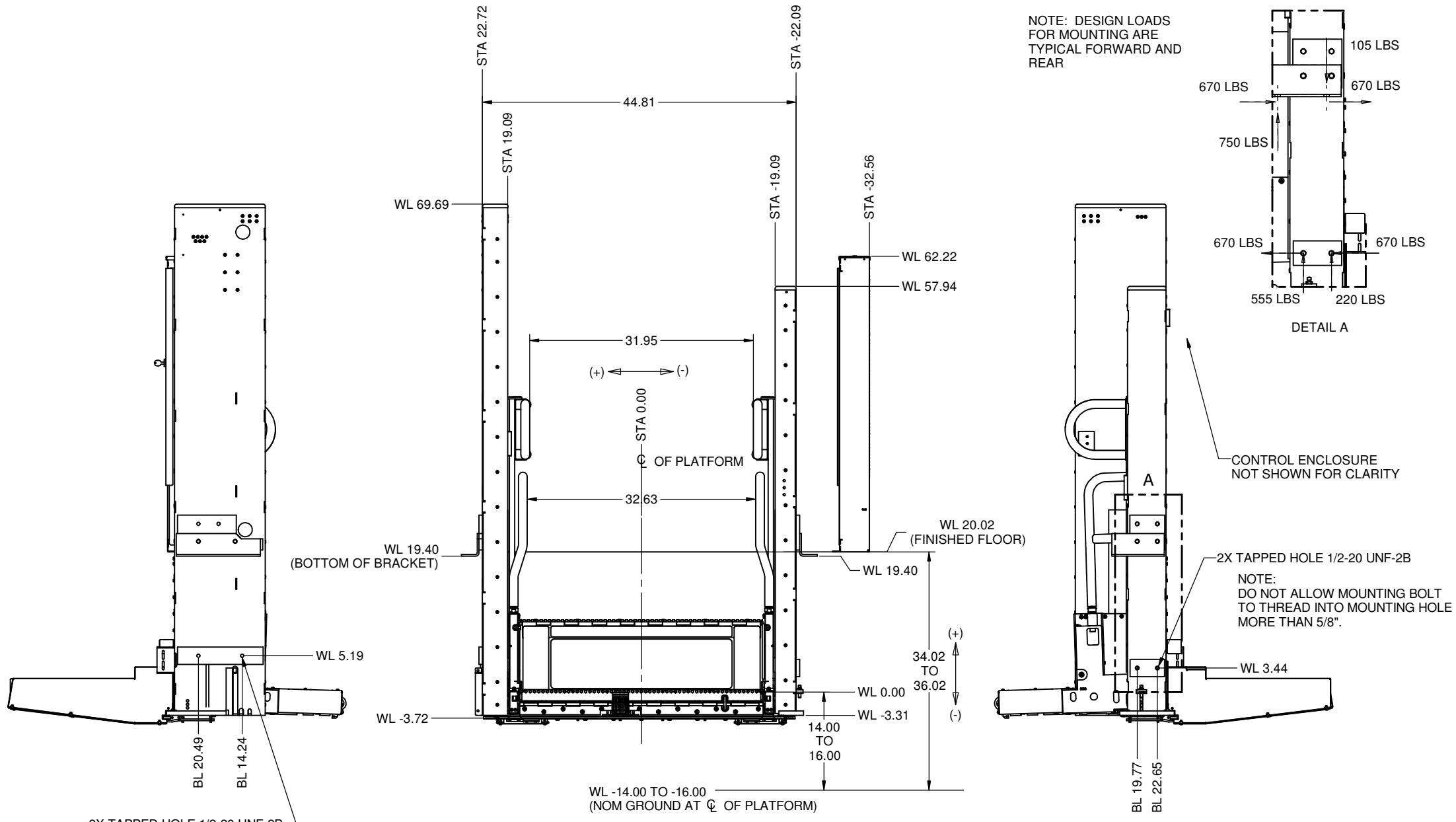
PLAN VIEW
LIFT SHOWN IN
STOWED POSITION



A DIVISION OF
HOGAN MFG., INC.

THIS DOCUMENT IS AND CONTAINS CONFIDENTIAL TRADE SECRET INFORMATION OF THE COMPANY. NO PART OF IT MAY BE REPRODUCED, STORED IN A RETRIEVAL SYSTEM, OR TRANSMITTED IN ANY FORM OR BY ANY MEANS ELECTRONICALLY, PHOTOCOPIING, RECORDING OR OTHERWISE, WITHOUT THE PRIOR WRITTEN PERMISSION OF HOGAN MFG. INC. THIS DOCUMENT IS LOANED FOR THE LIMITED PURPOSES STATED HEREIN ONLY, AND REMAINS THE PROPERTY OF THE COMPANY.

TITLE		
LIFT OPERATION/ENVELOPE		
DOCUMENT NO.	SHEET NO.	REVISION
700-0019	2 OF 3	C



2X TAPPED HOLE 1/2-20 UNF-2B

NOTE:
DO NOT ALLOW MOUNTING BOLT
TO THREAD INTO MOUNTING HOLE
MORE THAN 5/8".

ELEVATION VIEW - LOOKING ROADSIDE
LIFT SHOWN IN STOWED POSITION

LIFT-U
 P.O. BOX 398
 ESCALON, CA. 95320
 209-838-2400

A DIVISION OF
HOGAN MFG., INC.

THIS DOCUMENT IS AND CONTAINS CONFIDENTIAL
 TRADE SECRET INFORMATION OF THE COMPANY. NO
 PART OF IT MAY BE REPRODUCED, STORED IN A
 RETRIEVAL SYSTEM, OR TRANSMITTED IN ANY FORM
 OR BY ANY MEANS ELECTRONICALLY, PHOTOCOPYING,
 RECORDING OR OTHERWISE, WITHOUT THE PRIOR
 WRITTEN PERMISSION OF HOGAN MFG. INC.
 THIS DOCUMENT IS LOANED FOR THE LIMITED
 PURPOSES STATED HEREIN ONLY, AND REMAINS
 THE PROPERTY OF THE COMPANY.

TITLE		
LIFT OPERATION/ENVELOPE		
DOCUMENT NO.	SHEET NO.	REVISION
700-0019	3 OF 3	C