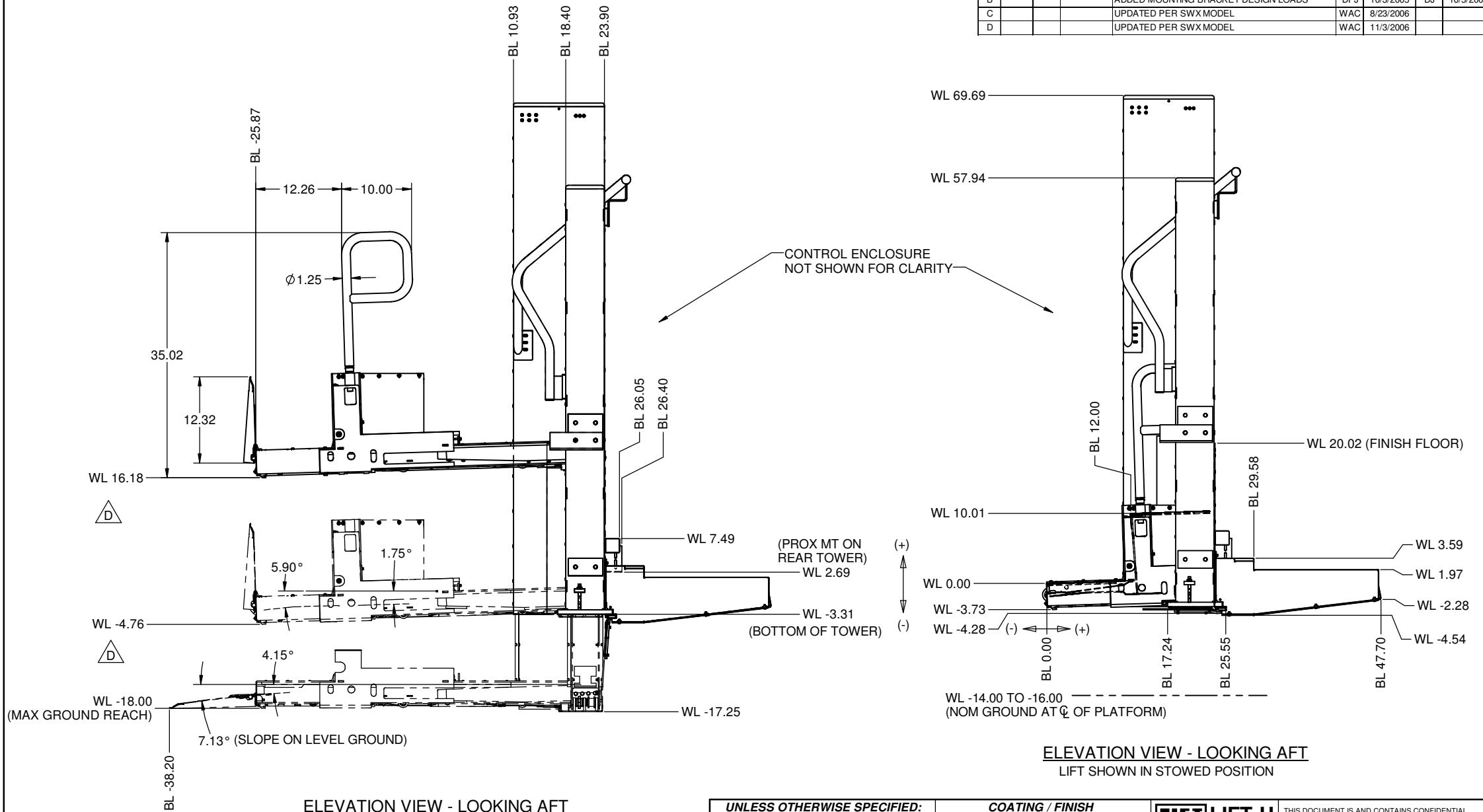



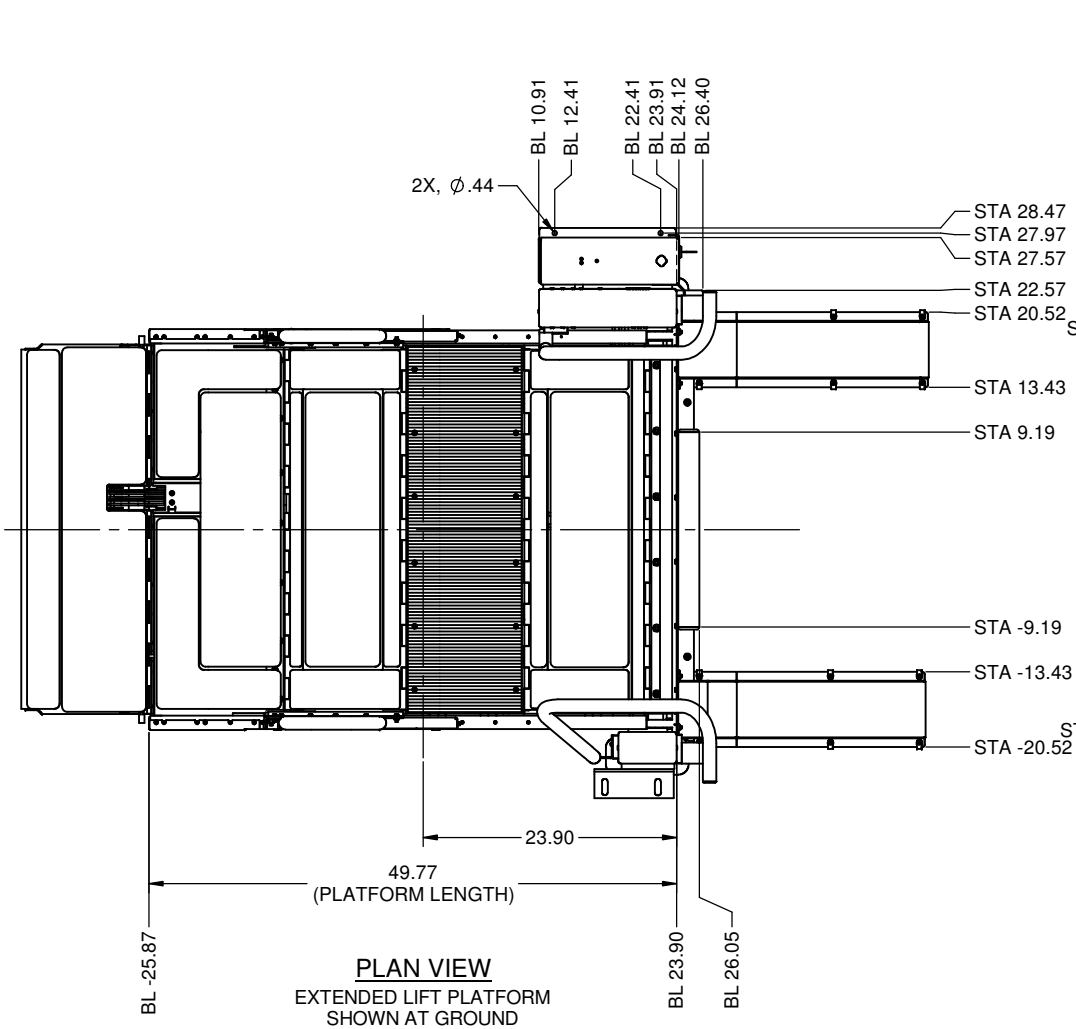
REVISIONS									
LTR	ECO	APPD	DATE	DESCRIPTION	DFTR	DATE	CHKR	DATE	
B				ADDED MOUNTING BRACKET DESIGN LOADS	DPJ	10/3/2005	DJ	10/5/2005	
C				UPDATED PER SWX MODEL	WAC	8/23/2006			
D				UPDATED PER SWX MODEL	WAC	11/3/2006			



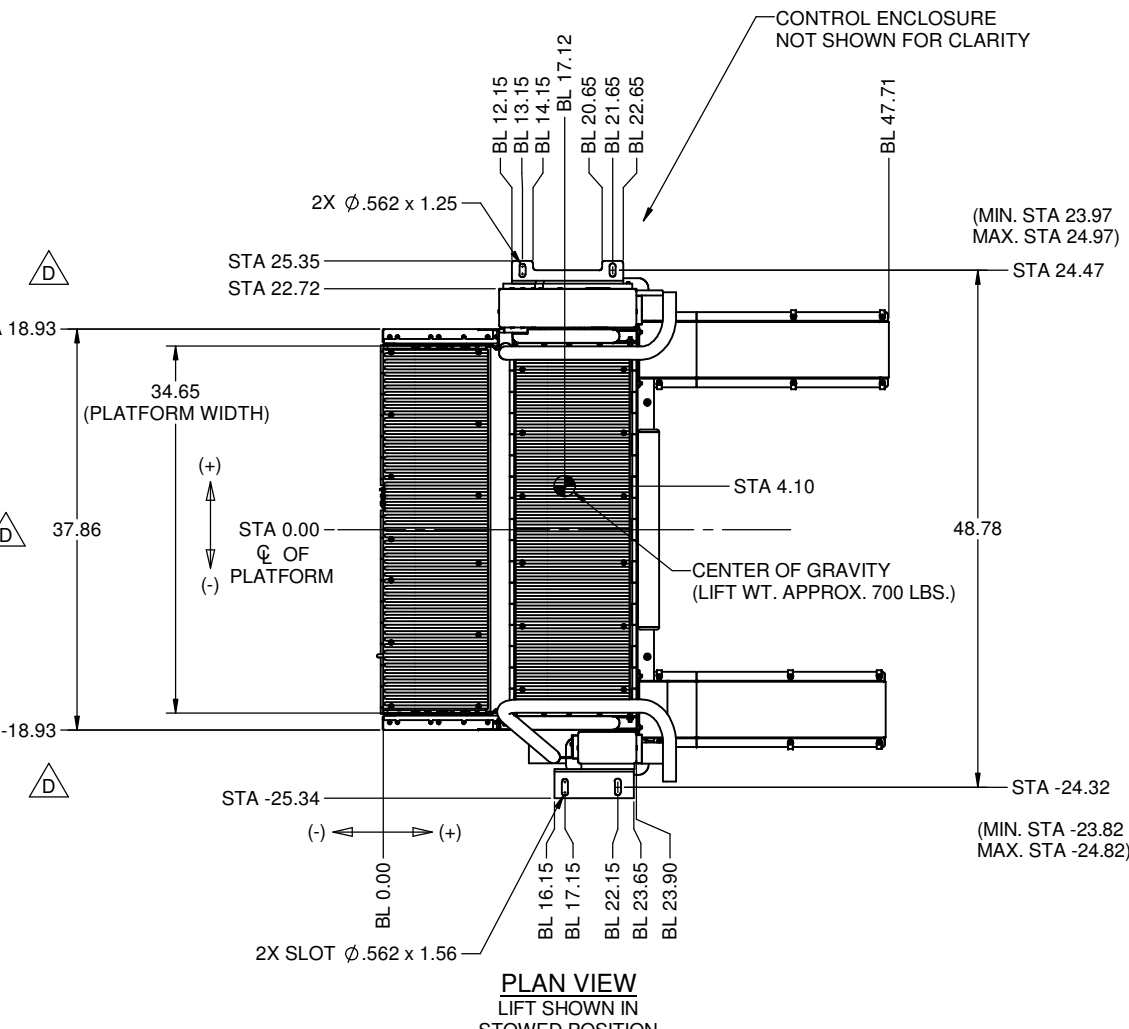
ELEVATION VIEW - LOOKING AFT
 EXTENDED LIFT PLATFORM SHOWN AT FLOOR LEVEL,
 DEPLOYED LEVEL AND MAX. GROUND REACH POSITION.

ELEVATION VIEW - LOOKING AFT
 LIFT SHOWN IN STOWED POSITION


UNLESS OTHERWISE SPECIFIED: - INTERPRET DRAWING PER ANSI Y14.5-1982. - DIMENSIONS ARE IN INCHES. - FINISH ALL PROCESSED SURFACES TO 125 RMS MAX. - DIMENSIONS APPLY TO FINISHED PART, BEFORE PAINTING. - DEBURR ALL SURFACES AND BREAK ALL EDGES .015 x 45°. - TOLERANCES (+ OR -): DECIMAL: FRACTION: 1/16 .XX = .03 .XXX = .010 .XXXX = .0005	COATING / FINISH DESC: NONE SPEC: NONE		 LIFT-U P.O. BOX 398 ESCALON, CA. 95320 209-838-2400 A DIVISION OF HOGAN MFG., INC.	THIS DOCUMENT IS AND CONTAINS CONFIDENTIAL TRADE SECRET INFORMATION OF THE COMPANY. NO PART OF IT MAY BE REPRODUCED, STORED IN A RETRIEVAL SYSTEM, OR TRANSMITTED IN ANY FORM OR BY ANY MEANS ELECTRONICALLY, PHOTOCOPYING, RECORDING OR OTHERWISE, WITHOUT THE PRIOR WRITTEN PERMISSION OF HOGAN MFG, INC. THIS DOCUMENT IS LOANED FOR THE LIMITED PURPOSES STATED HEREIN ONLY, AND REMAINS THE PROPERTY OF THE COMPANY.
	FIRST USE REFERENCE: LU12-18			
SCALE: 1:7	WEIGHT: (LBS.)	DOCUMENT NO. 700-0018	SHEET NO. 1 OF 3	REVISION D

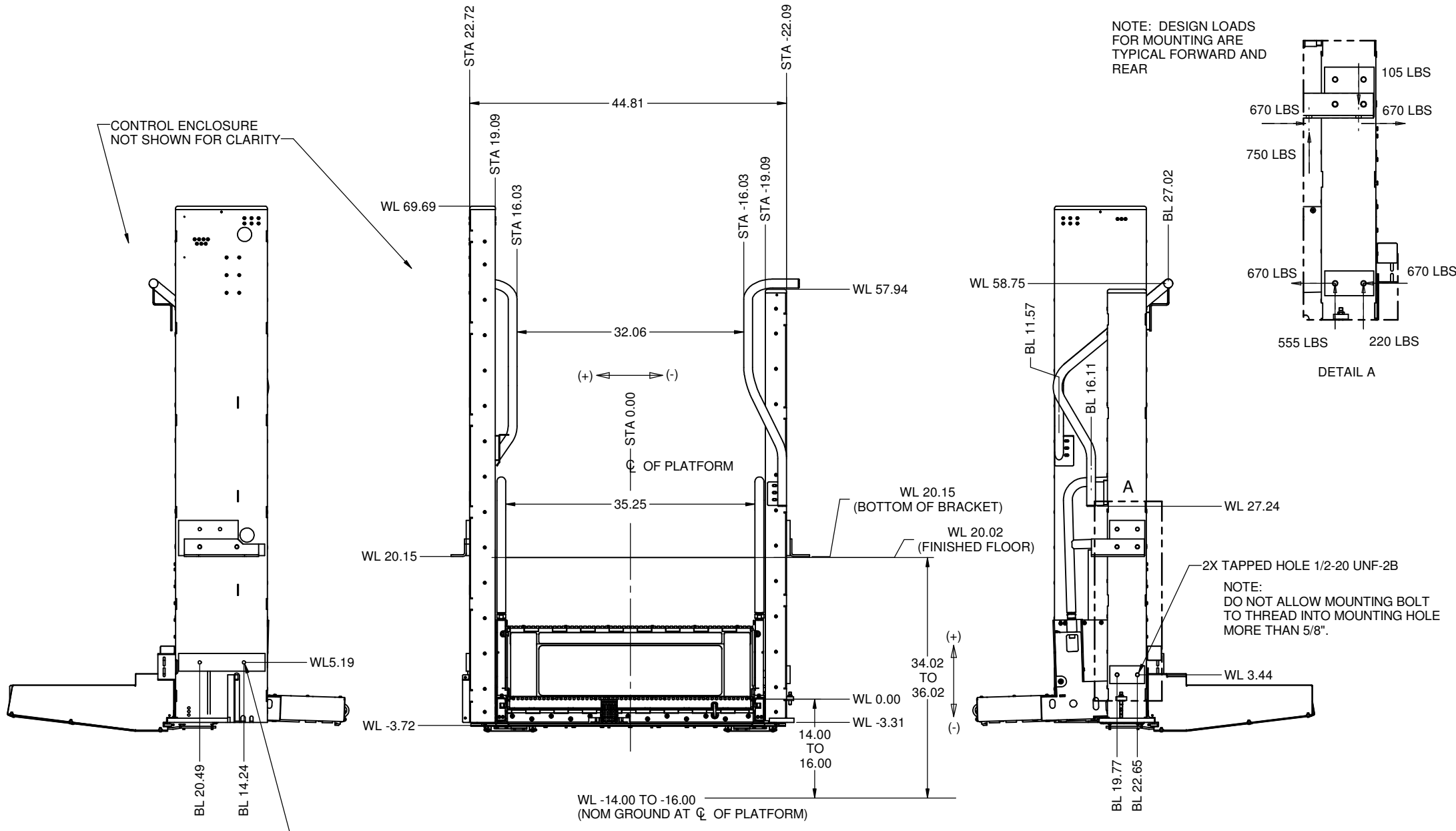


PLAN VIEW
EXTENDED LIFT PLATFORM
SHOWN AT GROUND

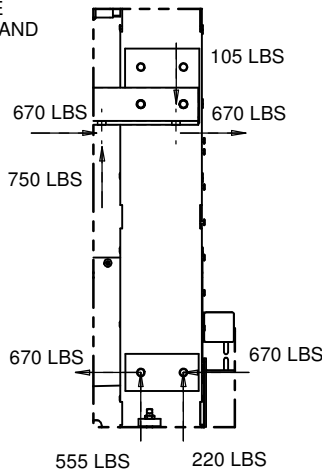


PLAN VIEW
LIFT SHOWN IN
STOWED POSITION

 LIFT-U P.O. BOX 398 ESCALON, CA. 95320 209-838-2400	THIS DOCUMENT IS AND CONTAINS CONFIDENTIAL TRADE SECRET INFORMATION OF THE COMPANY. NO PART OF IT MAY BE REPRODUCED, STORED IN A RETRIEVAL SYSTEM, OR TRANSMITTED IN ANY FORM OR BY ANY MEANS ELECTRONICALLY, PHOTOCOPIING, RECORDING OR OTHERWISE, WITHOUT THE PRIOR WRITTEN PERMISSION OF HOGAN MFG. INC. THIS DOCUMENT IS LOANED FOR THE LIMITED PURPOSES STATED HEREIN ONLY, AND REMAINS THE PROPERTY OF THE COMPANY.		
	A DIVISION OF HOGAN MFG., INC.		
TITLE LIFT OPERATION/ENVELOPE			
DOCUMENT NO. 700-0018	SHEET NO. 2 OF 3	REVISION D	



NOTE: DESIGN LOADS FOR MOUNTING ARE TYPICAL FORWARD AND REAR




DETAIL A

CONTROL ENCLOSURE NOT SHOWN FOR CLARITY

2X TAPPED HOLE 1/2-20 UNF-2B
 NOTE:
 DO NOT ALLOW MOUNTING BOLT TO THREAD INTO MOUNTING HOLE MORE THAN 5/8".

ELEVATION VIEW - LOOKING ROADSIDE
 LIFT SHOWN IN STOWED POSITION

2X TAPPED HOLE 1/2-20 UNF-2B
 NOTE:
 DO NOT ALLOW MOUNTING BOLT TO THREAD INTO MOUNTING HOLE MORE THAN 5/8".

 LIFT-U P.O. BOX 398 ESCALON, CA. 95320 209-838-2400	THIS DOCUMENT IS AND CONTAINS CONFIDENTIAL TRADE SECRET INFORMATION OF THE COMPANY. NO PART OF IT MAY BE REPRODUCED, STORED IN A RETRIEVAL SYSTEM, OR TRANSMITTED IN ANY FORM OR BY ANY MEANS ELECTRONICALLY, PHOTOCOPIING, RECORDING OR OTHERWISE, WITHOUT THE PRIOR WRITTEN PERMISSION OF HOGAN MFG. INC. THIS DOCUMENT IS LOANED FOR THE LIMITED PURPOSES STATED HEREIN ONLY, AND REMAINS THE PROPERTY OF THE COMPANY.		
	A DIVISION OF HOGAN MFG., INC.		
TITLE LIFT OPERATION/ENVELOPE			
DOCUMENT NO. 700-0018	SHEET NO. 3 OF 3	REVISION D	