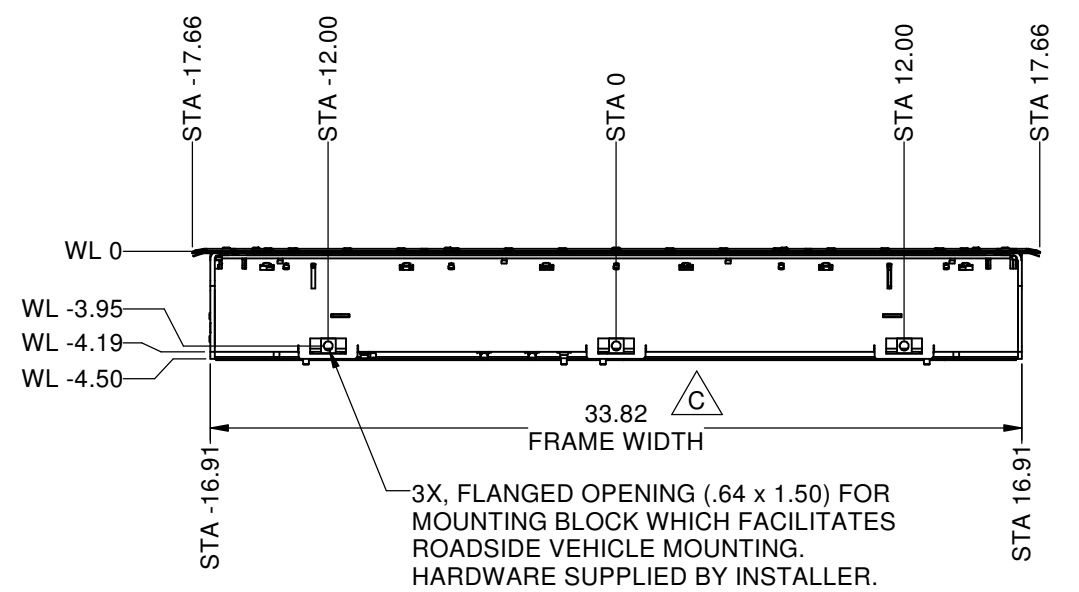
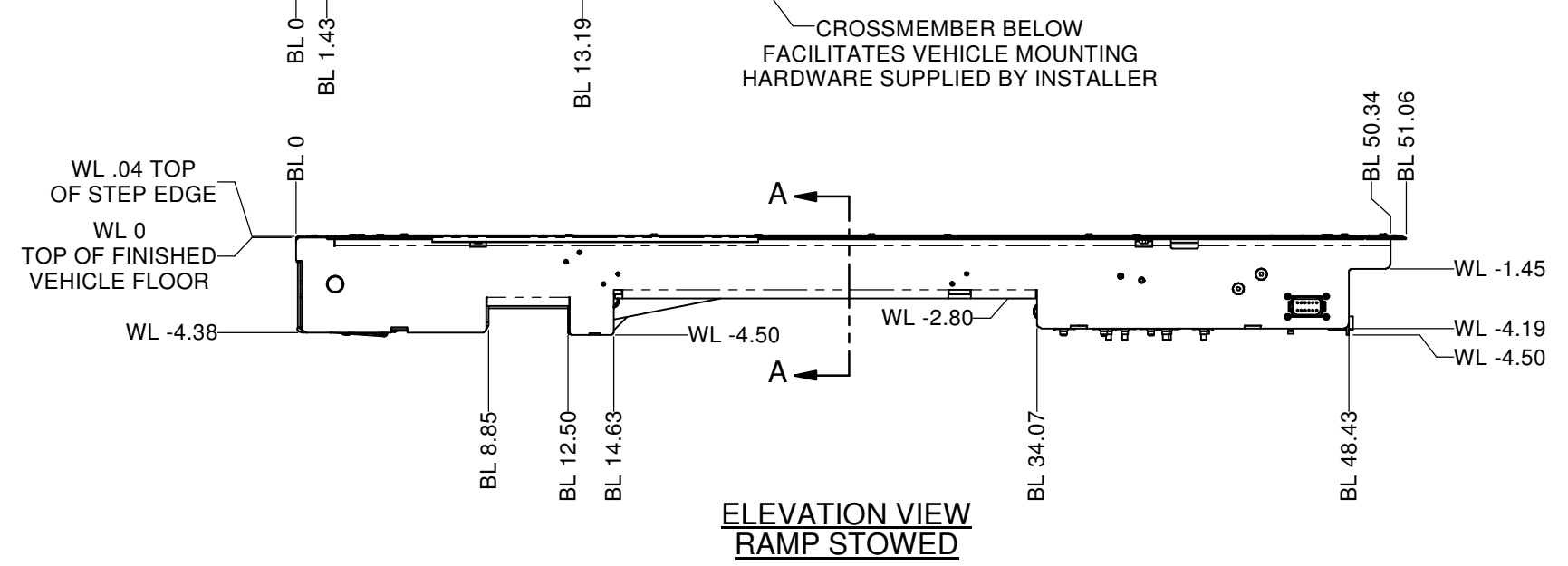
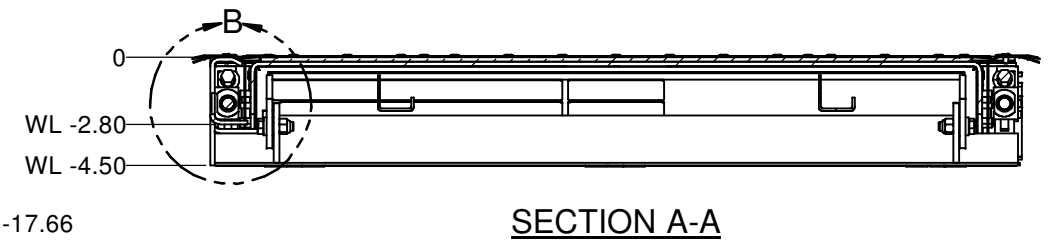
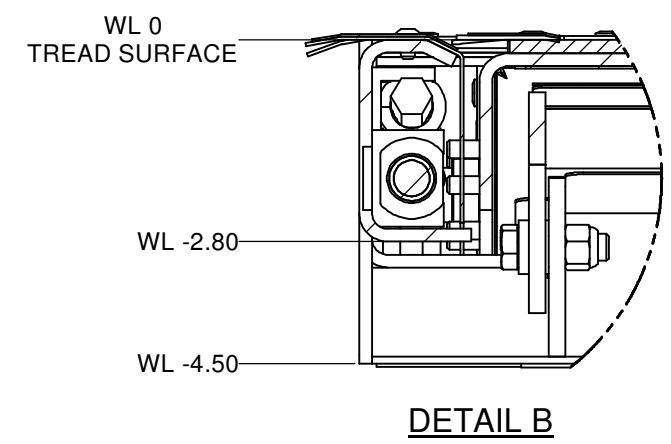
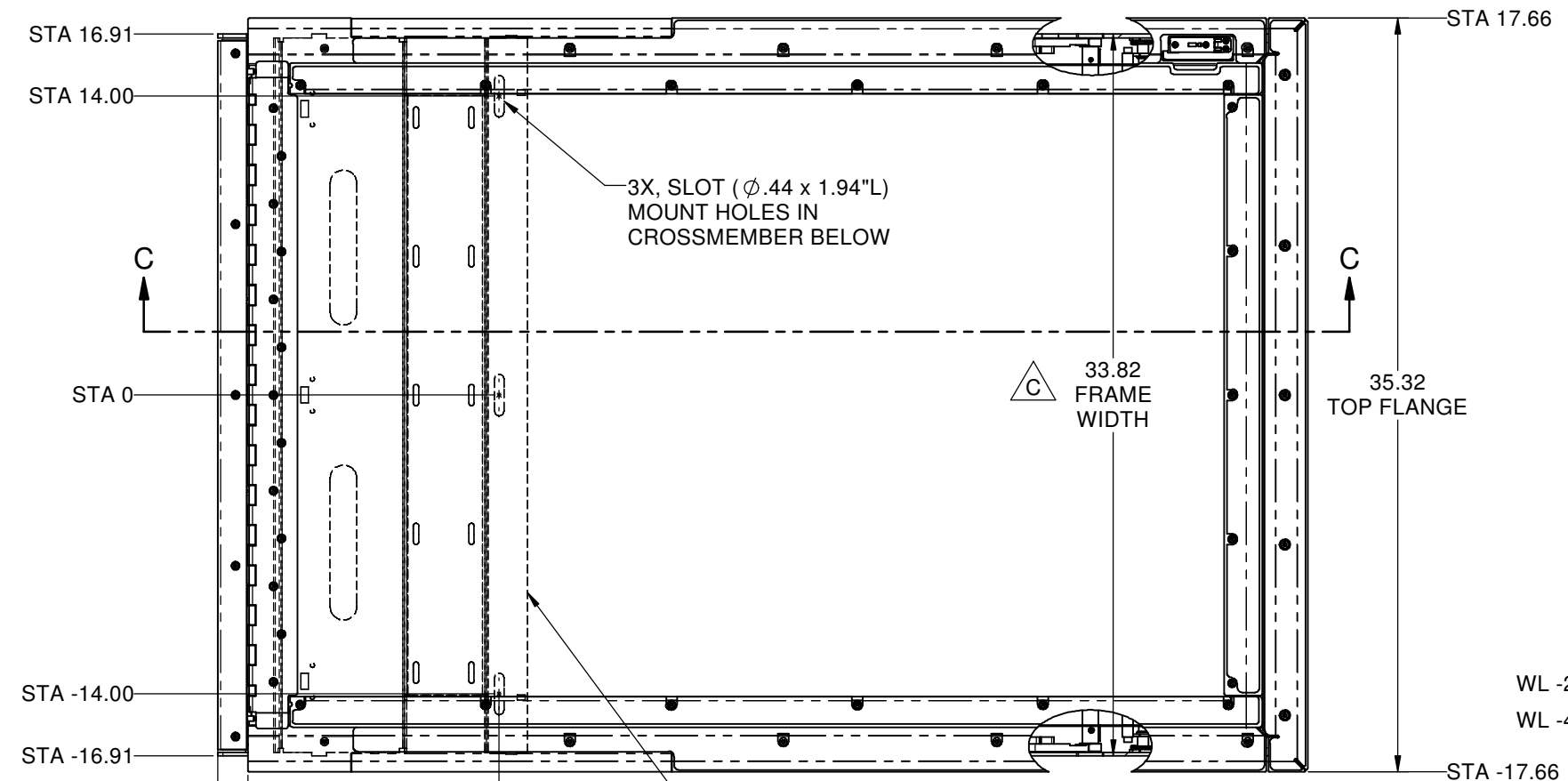



REVISIONS						
REV	ECO	DESCRIPTION	CREATED	DATE	APPROVED	DATE
A		RELEASED	DPJ	08/30/2012		
B		PICTORIAL UPDATE FOR NON-SKID	WAC	10-17-12		
C		FRAME WIDTH WAS 33.73	DPJ	05/26/213		



MAXIMUM INSTALLED INCLINE: 1 DEGREE

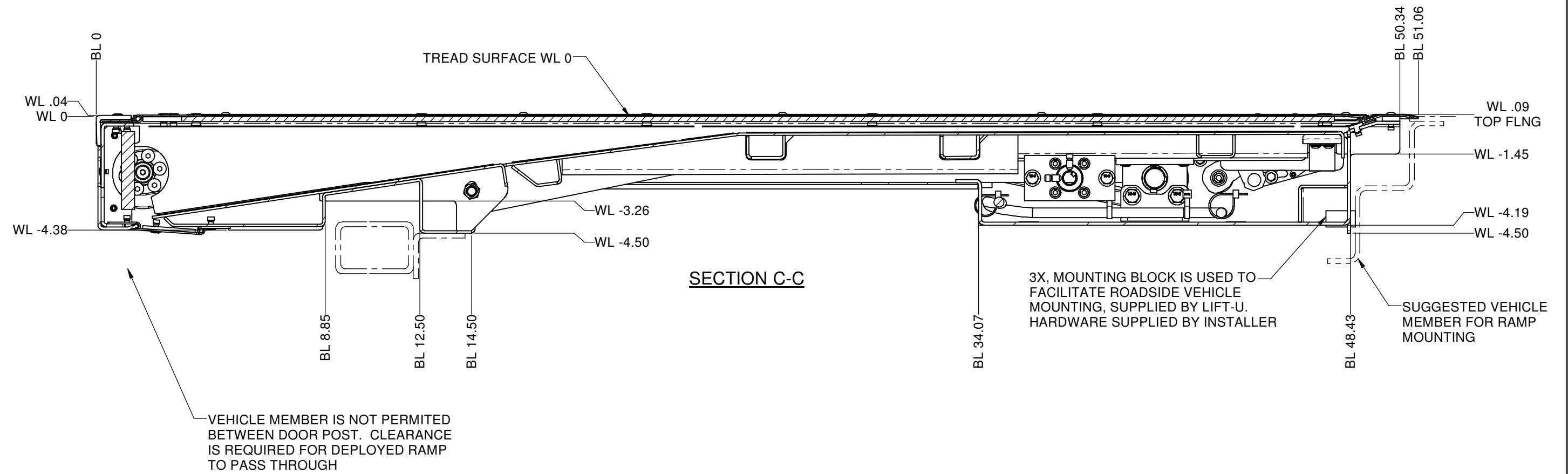


**LIFT-U**  
P.O. BOX 398  
ESCALON, CA. 95320  
209-838-2400

A DIVISION OF  
**HOGAN MFG., INC.**


THIS DOCUMENT IS AND CONTAINS CONFIDENTIAL TRADE SECRET INFORMATION OF THE COMPANY. NO PART OF IT MAY BE REPRODUCED, STORED IN A RETRIEVAL SYSTEM, OR TRANSMITTED IN ANY FORM OR BY ANY MEANS ELECTRONICALLY, PHOTOCOPIING, RECORDING OR OTHERWISE, WITHOUT THE PRIOR WRITTEN PERMISSION OF HOGAN MFG, INC. THIS DOCUMENT IS LOANED FOR THE LIMITED PURPOSES STATED HEREIN ONLY, AND REMAINS THE PROPERTY OF THE COMPANY.

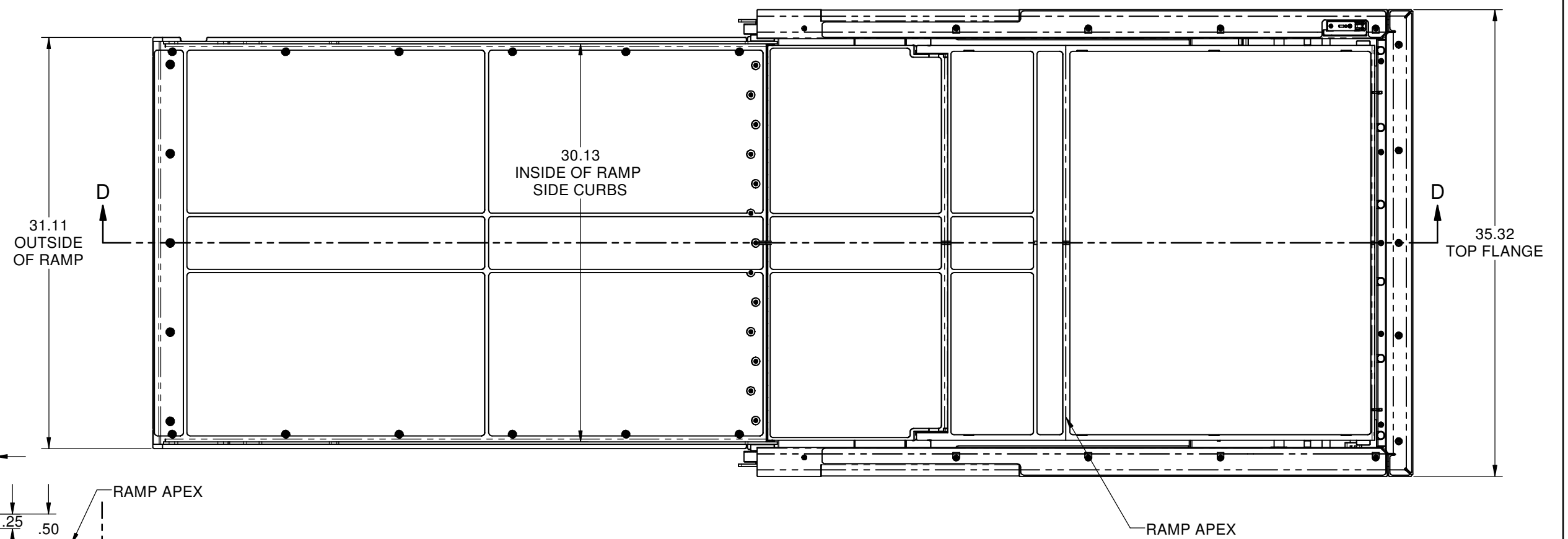
TITLE		RAMP OPERATION/ENVELOPE	
DOCUMENT NO.	746-0016	SHEET NO.	1 OF 5
		REVISION	C



**SECTION C-C**

**MAXIMUM INSTALLED INCLINE: 1 DEGREE**

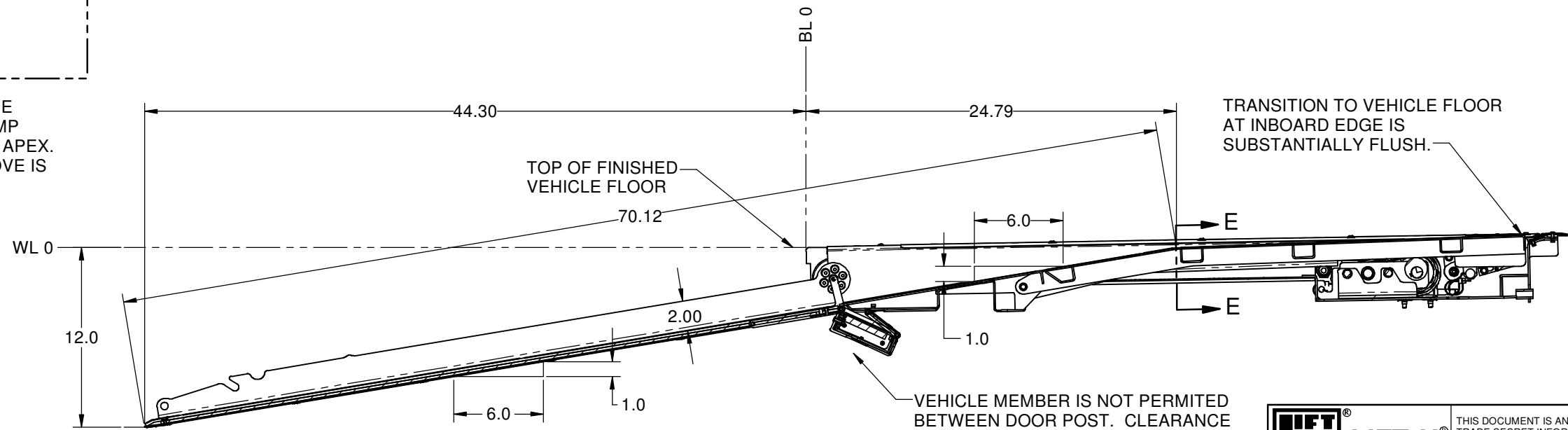
 <b>LIFT-U</b> P.O. BOX 398 ESCALON, CA. 95320 209-838-2400 A DIVISION OF <b>HOGAN MFG., INC.</b>	THIS DOCUMENT IS AND CONTAINS CONFIDENTIAL TRADE SECRET INFORMATION OF THE COMPANY. NO PART OF IT MAY BE REPRODUCED, STORED IN A RETRIEVAL SYSTEM, OR TRANSMITTED IN ANY FORM OR BY ANY MEANS ELECTRONICALLY, PHOTOCOPIING, RECORDING OR OTHERWISE, WITHOUT THE PRIOR WRITTEN PERMISSION OF HOGAN MFG, INC. THIS DOCUMENT IS LOANED FOR THE LIMITED PURPOSES STATED HEREIN ONLY, AND REMAINS THE PROPERTY OF THE COMPANY.	
	<b>TITLE</b> RAMP OPERATION/ENVELOPE	
<b>DOCUMENT NO.</b> 746-0016	<b>SHEET NO.</b> 2 OF 5	<b>REVISION</b> C



PLAN VIEW  
RAMP DEPLOYED TO GROUND LEVEL


THE DIMENSIONS SHOWN DEFINE THE TRANSITION FROM THE RAMP TO THE VEHICLE FLOOR AT THE APEX. THE TRANSITION DEPICTED ABOVE IS TYPICAL FORWARD AND REAR.

SECTION E-E



SECTION D-D

RAMP SHOWN INSTALLED AT 1° ANGLE

 <b>LIFT-U</b> P.O. BOX 398 ESCALON, CA. 95320 209-838-2400	THIS DOCUMENT IS AND CONTAINS CONFIDENTIAL TRADE SECRET INFORMATION OF THE COMPANY. NO PART OF IT MAY BE REPRODUCED, STORED IN A RETRIEVAL SYSTEM, OR TRANSMITTED IN ANY FORM OR BY ANY MEANS ELECTRONICALLY, PHOTOCOPIED, RECORDED OR OTHERWISE, WITHOUT THE PRIOR WRITTEN PERMISSION OF HOGAN MFG, INC. THIS DOCUMENT IS LOANED FOR THE LIMITED PURPOSES STATED HEREIN ONLY, AND REMAINS THE PROPERTY OF THE COMPANY.	
	A DIVISION OF <b>HOGAN MFG., INC.</b>	
<b>TITLE</b> RAMP OPERATION/ENVELOPE		
<b>DOCUMENT NO.</b> 746-0016	<b>SHEET NO.</b> 3 OF 5	<b>REVISION</b> C

CUSTOMER SPECIFIED FLOORING

TRIM FLANGES INCLUDE  
NON-SKID SURFACE

RISING FLOOR NON-SKID SURFACES

STEP EDGE CLOSEOUT  
INCLUDES NON-SKID NOSING

ISOMETRIC VIEW  
RAMP STOWED

ISOMETRIC VIEW  
RAMP DEPLOYED TO GROUND LEVEL

RAMP NON-SKID SURFACES



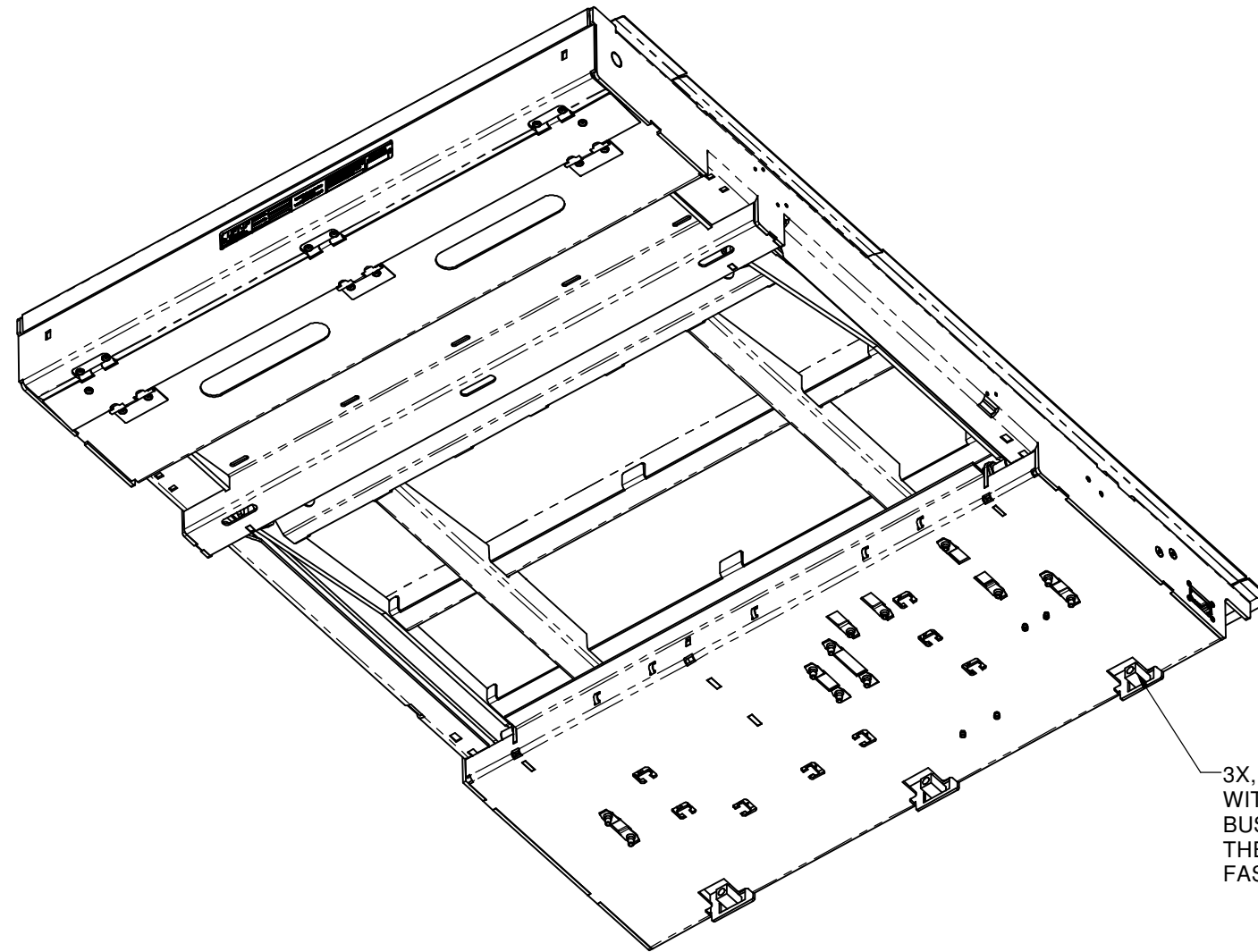
**LIFT-U**<sup>®</sup>

P.O. BOX 398  
ESCALON, CA. 95320  
209-838-2400

A DIVISION OF  
**HOGAN MFG., INC.**

THIS DOCUMENT IS AND CONTAINS CONFIDENTIAL  
TRADE SECRET INFORMATION OF THE COMPANY. NO  
PART OF IT MAY BE REPRODUCED, STORED IN A  
RETRIEVAL SYSTEM, OR TRANSMITTED IN ANY FORM  
OR BY ANY MEANS ELECTRONICALLY, PHOTOCOPYING,  
RECORDING OR OTHERWISE, WITHOUT THE PRIOR  
WRITTEN PERMISSION OF HOGAN MFG, INC.  
THIS DOCUMENT IS LOANED FOR THE LIMITED  
PURPOSES STATED HEREIN ONLY, AND REMAINS  
THE PROPERTY OF THE COMPANY.

TITLE		RAMP OPERATION/ENVELOPE	
DOCUMENT NO.	746-0016	SHEET NO.	4 OF 5
		REVISION	C



3X, MOUNTING BLOCKS ARE SLIDINGLY ENGAGED WITH THE RAMP FRAME AND BOLTED FAST TO THE BUS CHASSIS BRACKET. THE MOUNTING BLOCKS ARE SUPPLIED BY LIFT-U. FASTENING HARDWARE SUPPLIED BY INSTALLER.

ISOMETRIC VIEW FROM BELOW  
RAMP STOWED



**LIFT-U**<sup>®</sup>

P.O. BOX 398  
ESCALON, CA. 95320  
209-838-2400

A DIVISION OF  
**HOGAN MFG., INC.**

THIS DOCUMENT IS AND CONTAINS CONFIDENTIAL TRADE SECRET INFORMATION OF THE COMPANY. NO PART OF IT MAY BE REPRODUCED, STORED IN A RETRIEVAL SYSTEM, OR TRANSMITTED IN ANY FORM OR BY ANY MEANS ELECTRONICALLY, PHOTOCOPYING, RECORDING OR OTHERWISE, WITHOUT THE PRIOR WRITTEN PERMISSION OF HOGAN MFG, INC. THIS DOCUMENT IS LOANED FOR THE LIMITED PURPOSES STATED HEREIN ONLY, AND REMAINS THE PROPERTY OF THE COMPANY.

TITLE **RAMP OPERATION/ENVELOPE**

DOCUMENT NO. **746-0016**

SHEET NO. **5 OF 5**

REVISION **C**