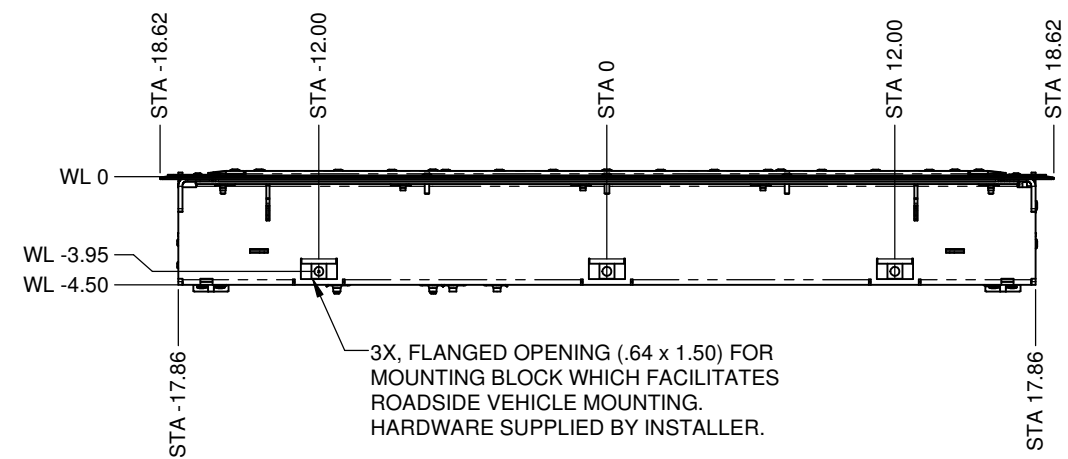
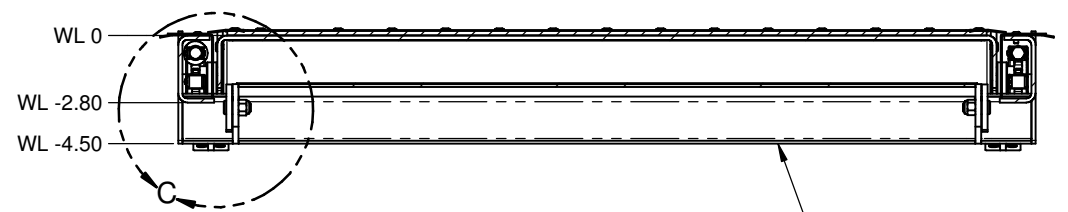


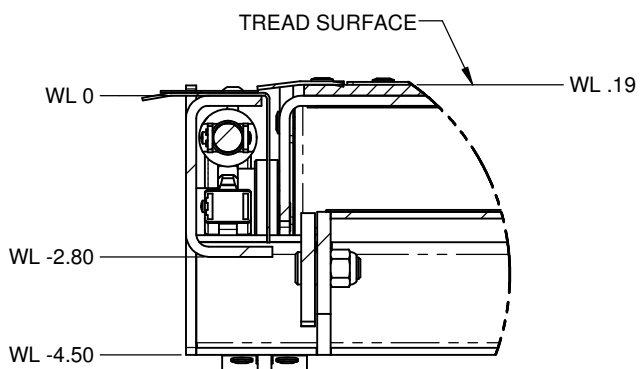
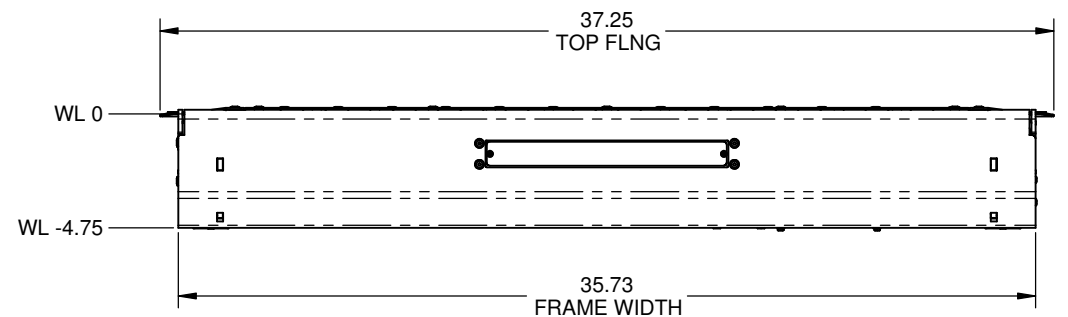
REVISIONS									
LTR	ECO	APPD	DATE	DESCRIPTION	DFTR	DATE	CHKR	DATE	
A				RELEASED		6/25/2009			



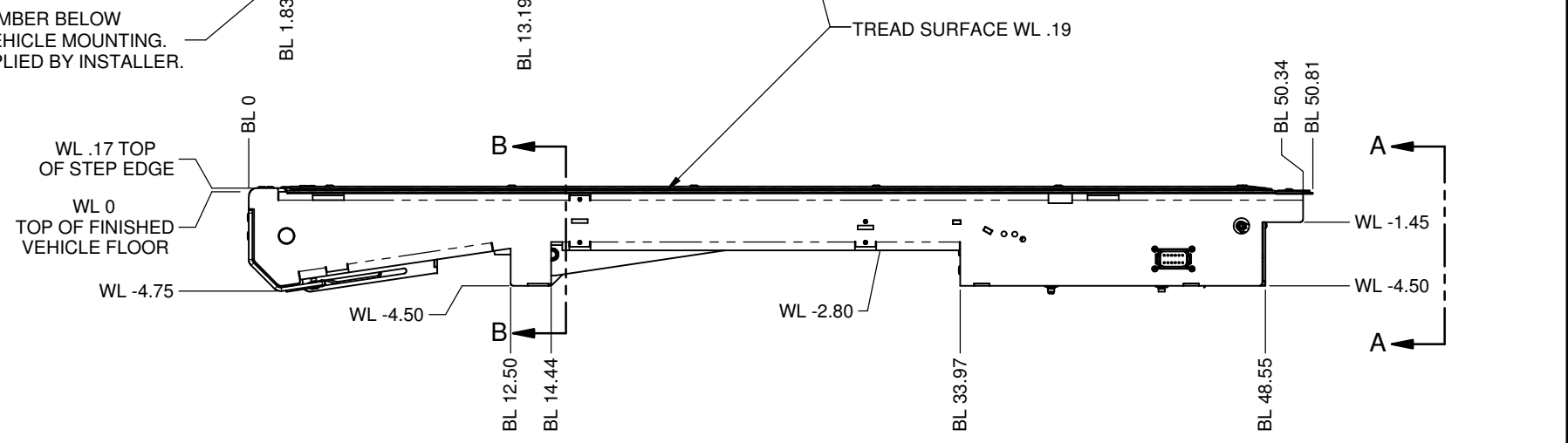
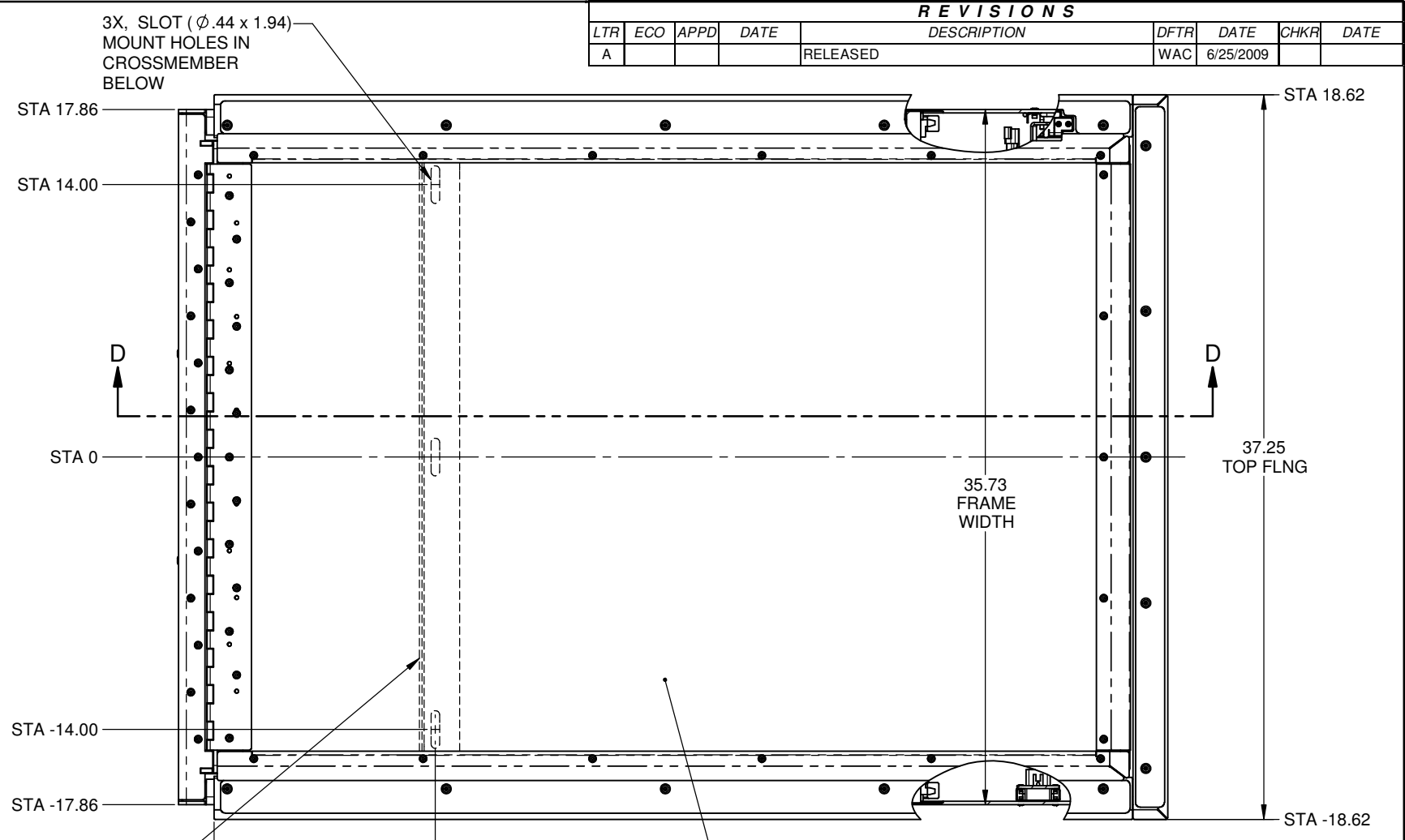
**VIEW A-A**



**SECTION B-B**



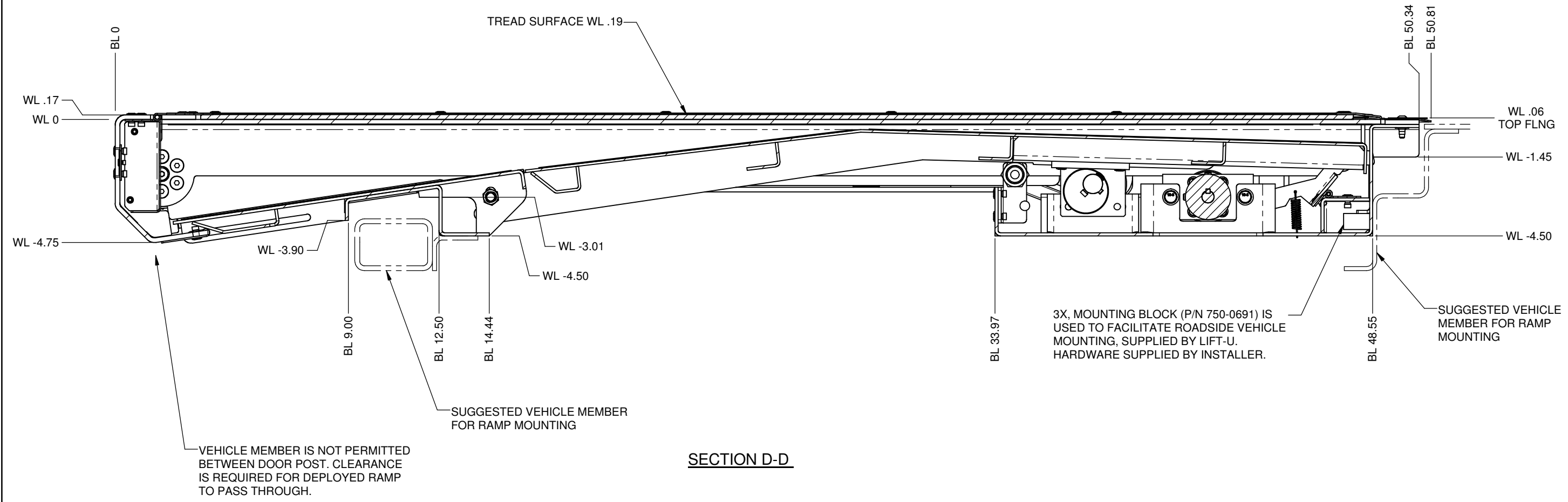
**DETAIL C**




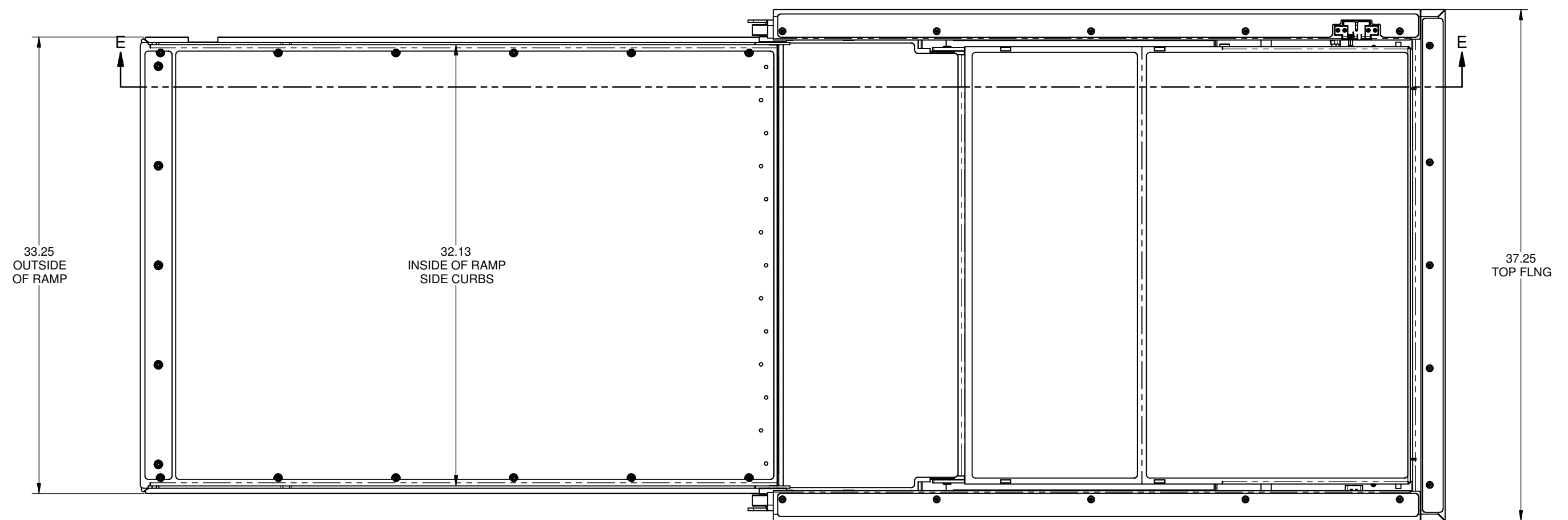
**ELEVATION VIEW  
RAMP STOWED**

**MAXIMUM INSTALLED INCLINE: 1 DEGREE**

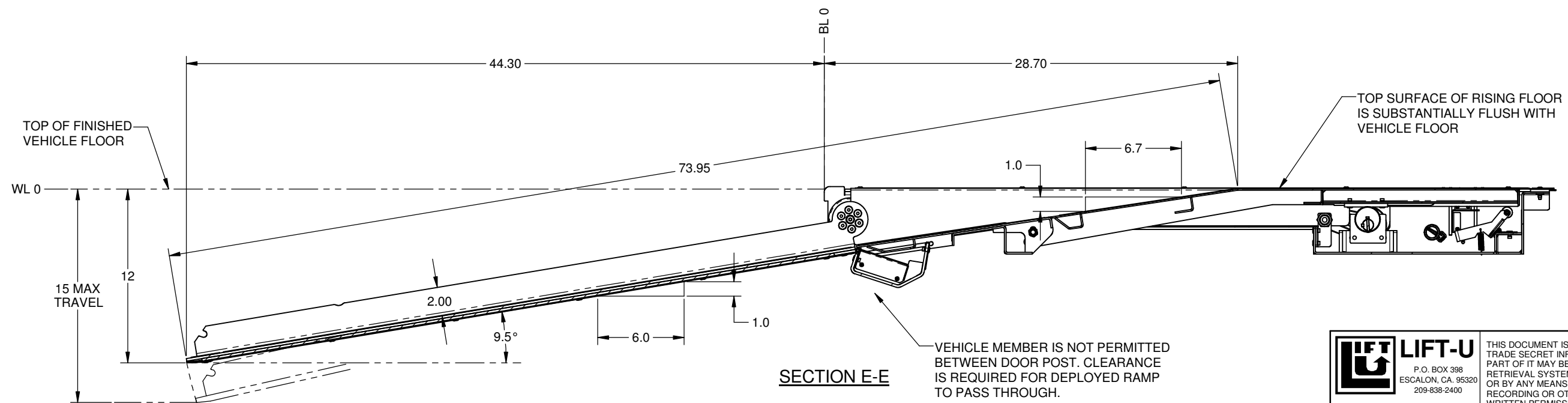
<p><b>LIFT-U</b> P.O. BOX 398 ESCALON, CA. 95320 209-838-2400</p>	<p>THIS DOCUMENT IS AND CONTAINS CONFIDENTIAL TRADE SECRET INFORMATION OF THE COMPANY. NO PART OF IT MAY BE REPRODUCED, STORED IN A RETRIEVAL SYSTEM, OR TRANSMITTED IN ANY FORM OR BY ANY MEANS ELECTRONICALLY, PHOTOCOPIING, RECORDING OR OTHERWISE, WITHOUT THE PRIOR WRITTEN PERMISSION OF HOGAN MFG., INC. THIS DOCUMENT IS LOANED FOR THE LIMITED PURPOSES STATED HEREIN ONLY, AND REMAINS THE PROPERTY OF THE COMPANY.</p>	
	<p>A DIVISION OF <b>HOGAN MFG., INC.</b></p>	
<p><b>TITLE</b> RAMP OPERATION/ENVELOPE</p>		
<p><b>DOCUMENT NO.</b> 746-0010</p>	<p><b>SHEET NO.</b> 1 OF 4</p>	<p><b>REVISION</b> A</p>



 <b>LIFT-U</b> P.O. BOX 398 ESCALON, CA. 95320 209-838-2400	THIS DOCUMENT IS AND CONTAINS CONFIDENTIAL TRADE SECRET INFORMATION OF THE COMPANY. NO PART OF IT MAY BE REPRODUCED, STORED IN A RETRIEVAL SYSTEM, OR TRANSMITTED IN ANY FORM OR BY ANY MEANS ELECTRONICALLY, PHOTOCOPYING, RECORDING OR OTHERWISE, WITHOUT THE PRIOR WRITTEN PERMISSION OF HOGAN MFG., INC. THIS DOCUMENT IS LOANED FOR THE LIMITED PURPOSES STATED HEREIN ONLY, AND REMAINS THE PROPERTY OF THE COMPANY.	
	A DIVISION OF <b>HOGAN MFG., INC.</b>	
<b>TITLE</b> RAMP OPERATION/ENVELOPE		
<b>DOCUMENT NO.</b> 746-0010	<b>SHEET NO.</b> 2 OF 4	<b>REVISION</b> A



PLAN VIEW  
RAMP DEPLOYED TO GROUND LEVEL



SECTION E-E

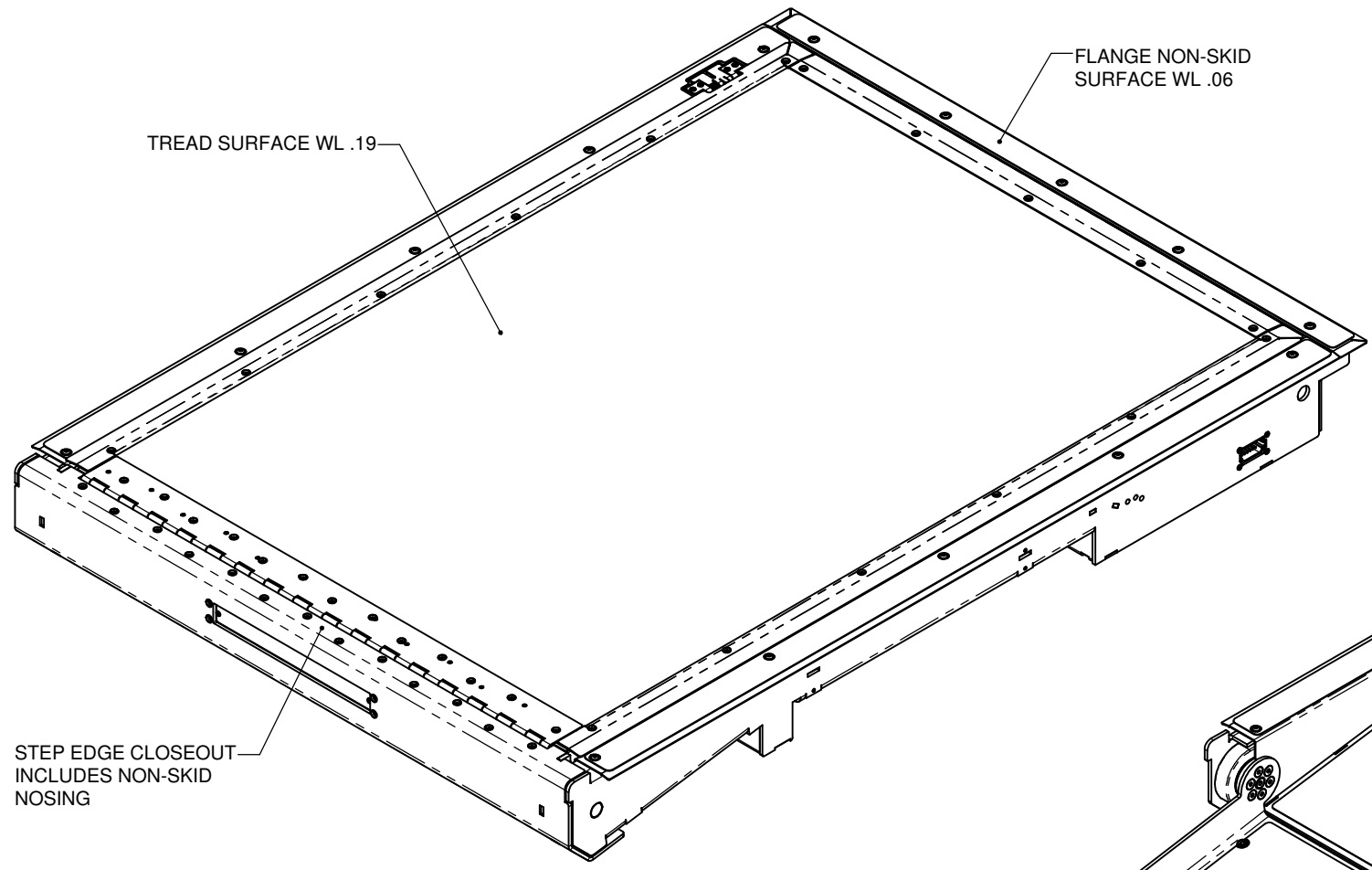
MAXIMUM INSTALLED INCLINE: 1 DEGREE



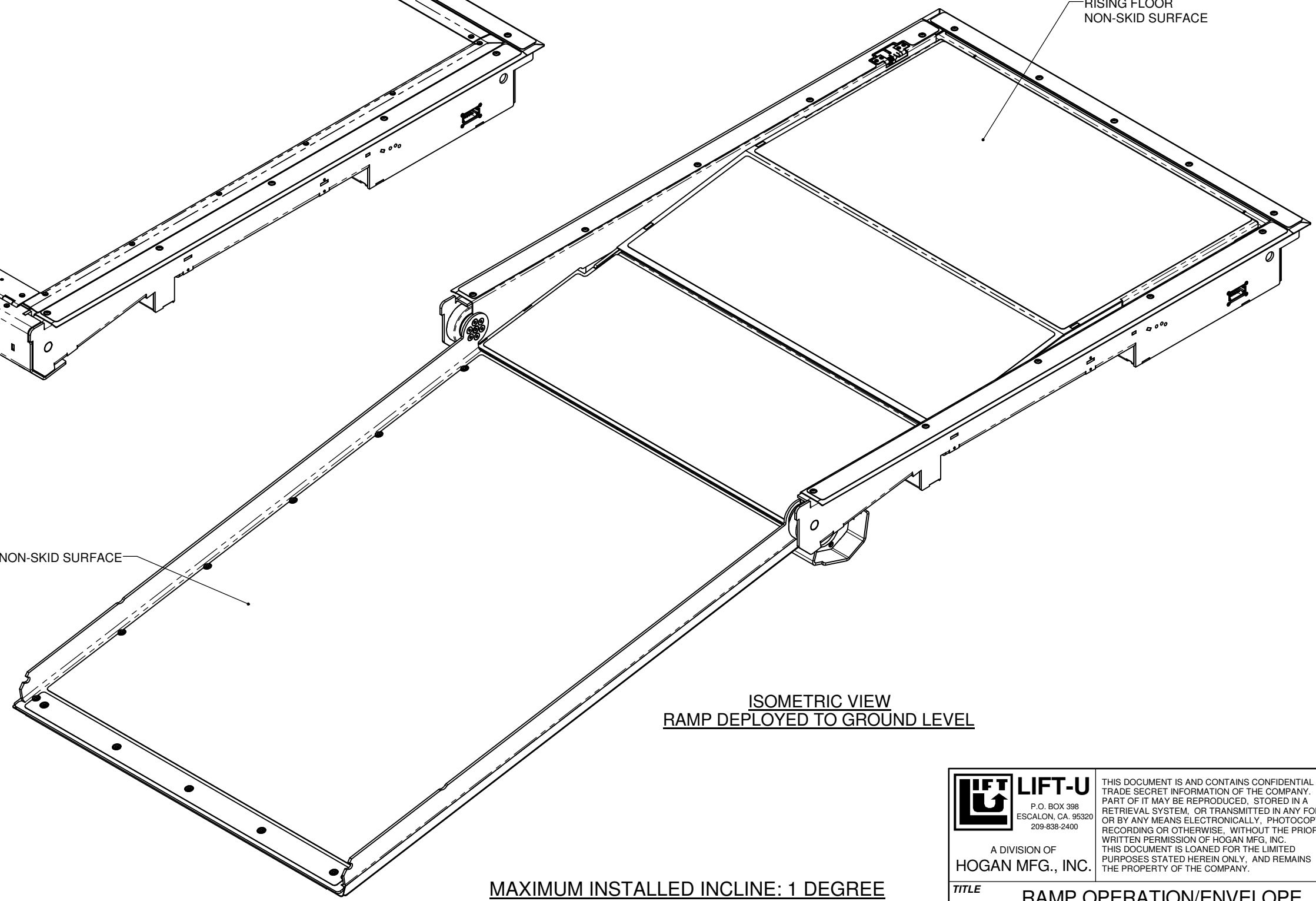
A DIVISION OF  
HOGAN MFG., INC.

THIS DOCUMENT IS AND CONTAINS CONFIDENTIAL TRADE SECRET INFORMATION OF THE COMPANY. NO PART OF IT MAY BE REPRODUCED, STORED IN A RETRIEVAL SYSTEM, OR TRANSMITTED IN ANY FORM OR BY ANY MEANS ELECTRONICALLY, PHOTOCOPYING, RECORDING OR OTHERWISE, WITHOUT THE PRIOR WRITTEN PERMISSION OF HOGAN MFG., INC. THIS DOCUMENT IS LOANED FOR THE LIMITED PURPOSES STATED HEREIN ONLY, AND REMAINS THE PROPERTY OF THE COMPANY.

TITLE	RAMP OPERATION/ENVELOPE		
DOCUMENT NO.	746-0010	SHEET NO.	3 OF 4
		REVISION	A



ISOMETRIC VIEW  
RAMP STOWED



ISOMETRIC VIEW  
RAMP DEPLOYED TO GROUND LEVEL

MAXIMUM INSTALLED INCLINE: 1 DEGREE



**LIFT-U**  
P.O. BOX 398  
ESCALON, CA. 95320  
209-838-2400

THIS DOCUMENT IS AND CONTAINS CONFIDENTIAL TRADE SECRET INFORMATION OF THE COMPANY. NO PART OF IT MAY BE REPRODUCED, STORED IN A RETRIEVAL SYSTEM, OR TRANSMITTED IN ANY FORM OR BY ANY MEANS ELECTRONICALLY, PHOTOCOPYING, RECORDING OR OTHERWISE, WITHOUT THE PRIOR WRITTEN PERMISSION OF HOGAN MFG, INC. THIS DOCUMENT IS LOANED FOR THE LIMITED PURPOSES STATED HEREIN ONLY, AND REMAINS THE PROPERTY OF THE COMPANY.

A DIVISION OF <b>HOGAN MFG., INC.</b>		<b>TITLE</b> RAMP OPERATION/ENVELOPE	
<b>DOCUMENT NO.</b> 746-0010	<b>SHEET NO.</b> 4 OF 4	<b>REVISION</b> A	