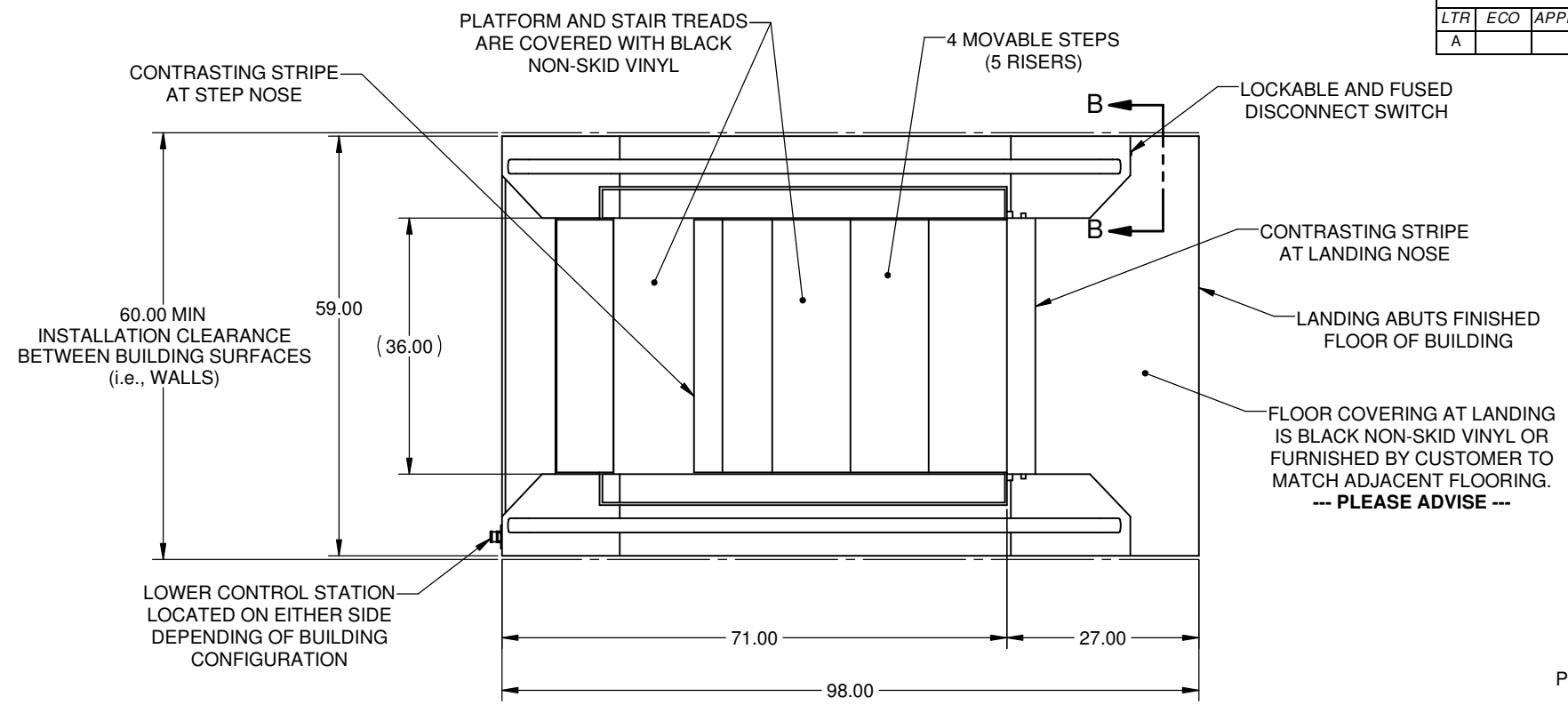
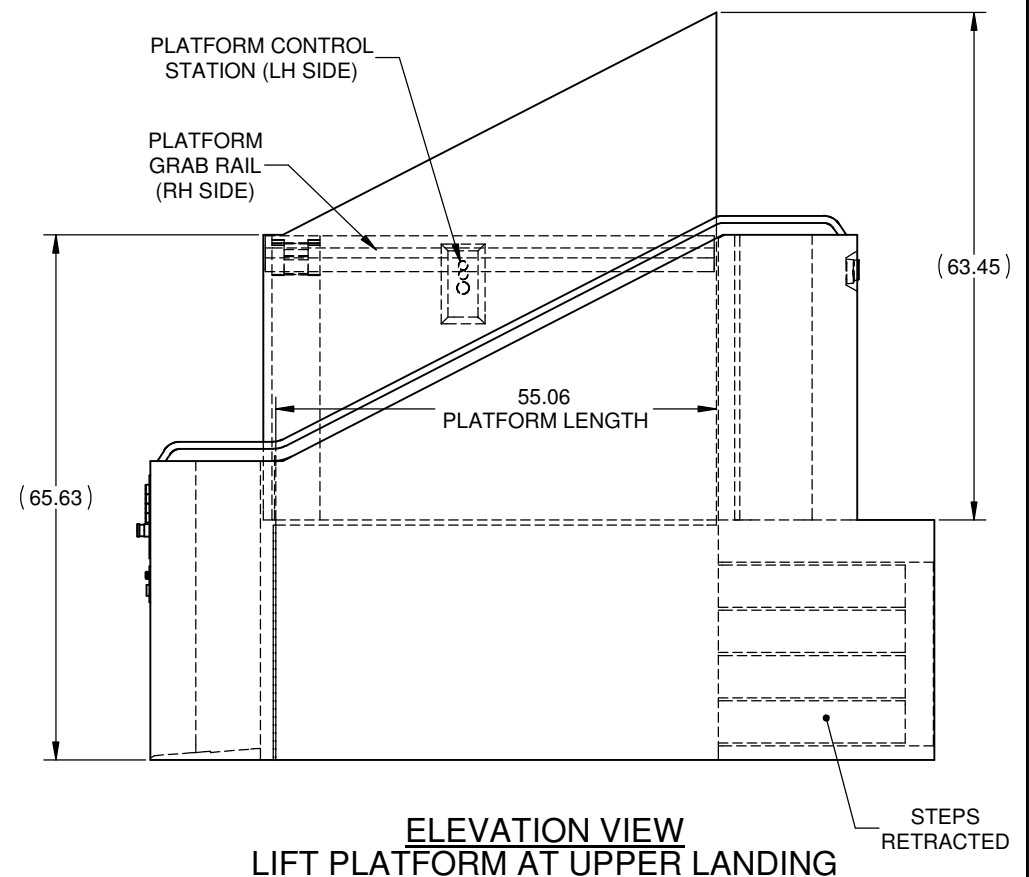
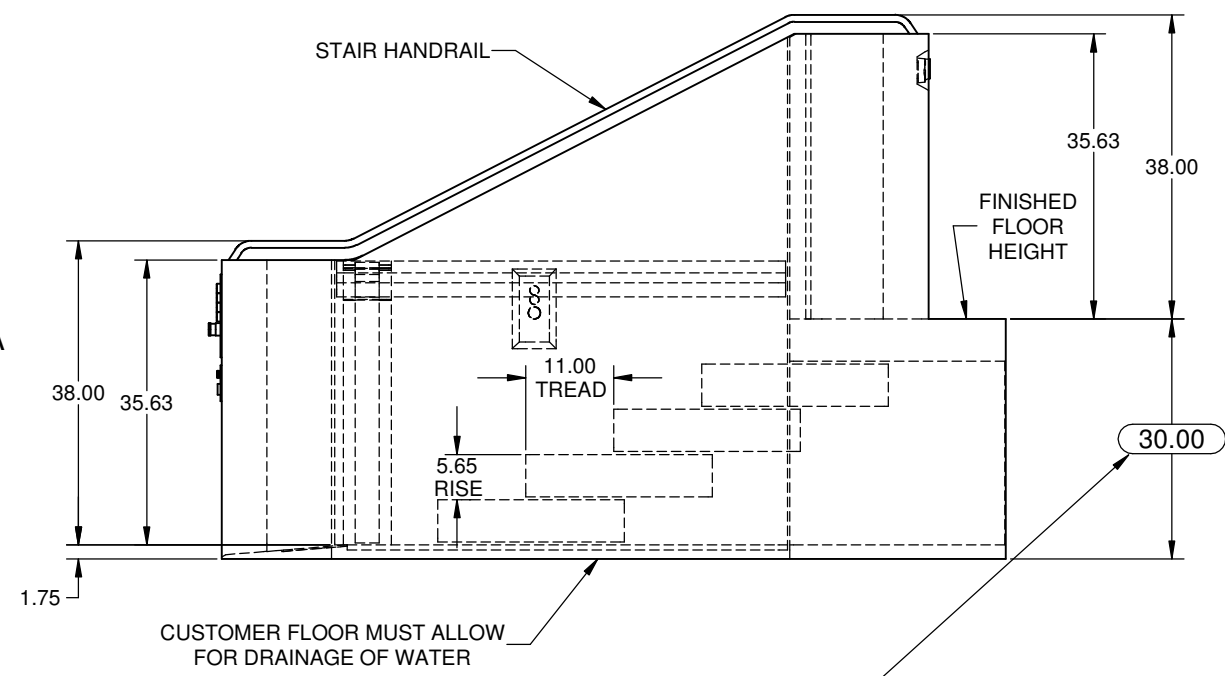
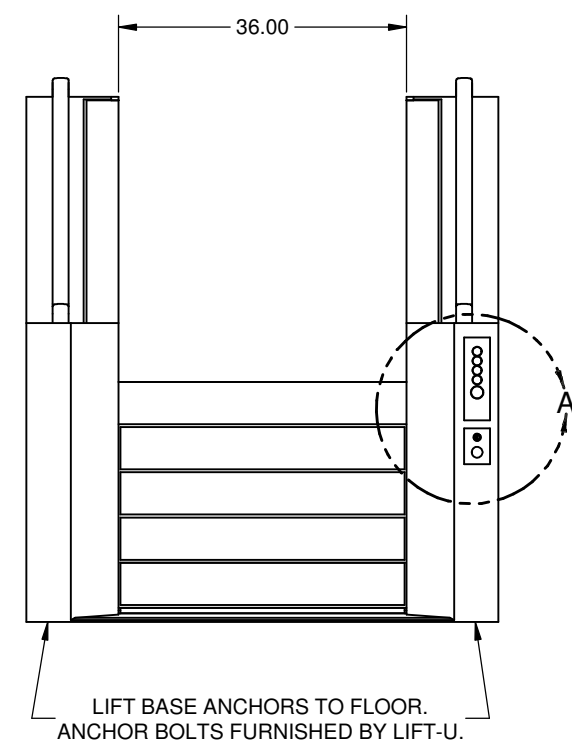


REVISIONS											
LTR	ECO	APPD	DATE	DESCRIPTION	DFTR	DATE	CHKR	DATE			
A				RELEASED							



- NOTES:**
- 1) THIS DRAWING IS SUBJECT TO CHANGE PENDING APPLICABLE STATE AND LOCAL CODES, AND CUSTOMER APPROVAL.
  - 2) CUSTOMER MUST PROVIDE APPLICABLE STATE AND LOCAL CODES TO LIFT-U PRIOR TO DESIGN.
  - 3) DRAWING MUST BE SIGNED BY CUSTOMER AND RETURNED TO LIFT-U PRIOR TO PRODUCTION RELEASE. CUSTOMER APPROVAL SIGNIFIES THAT ALL DIMENSIONS ARE CORRECT TO THEIR SPECIFICATIONS.
  - 4) SEE SHEET 2 OF 3 FOR LIFT SPECIFICATIONS.



**ELEVATION VIEW  
LIFT PLATFORM AT UPPER LANDING**

**ELEVATION VIEW  
STEPS CONFIGURATION**

**APPROVAL NOTE:  
CONTRACTOR MUST VERIFY LANDING HEIGHT  
PRIOR TO RELEASE FOR FABRICATION.  
MEASUREMENT TO BE TAKEN FROM BASE FLOOR AT  
THE LOWER LANDING TO THE FINISH FLOOR AT THE UPPER  
LANDING. SEE DETAILS ON SHEET 3 OF 3.**

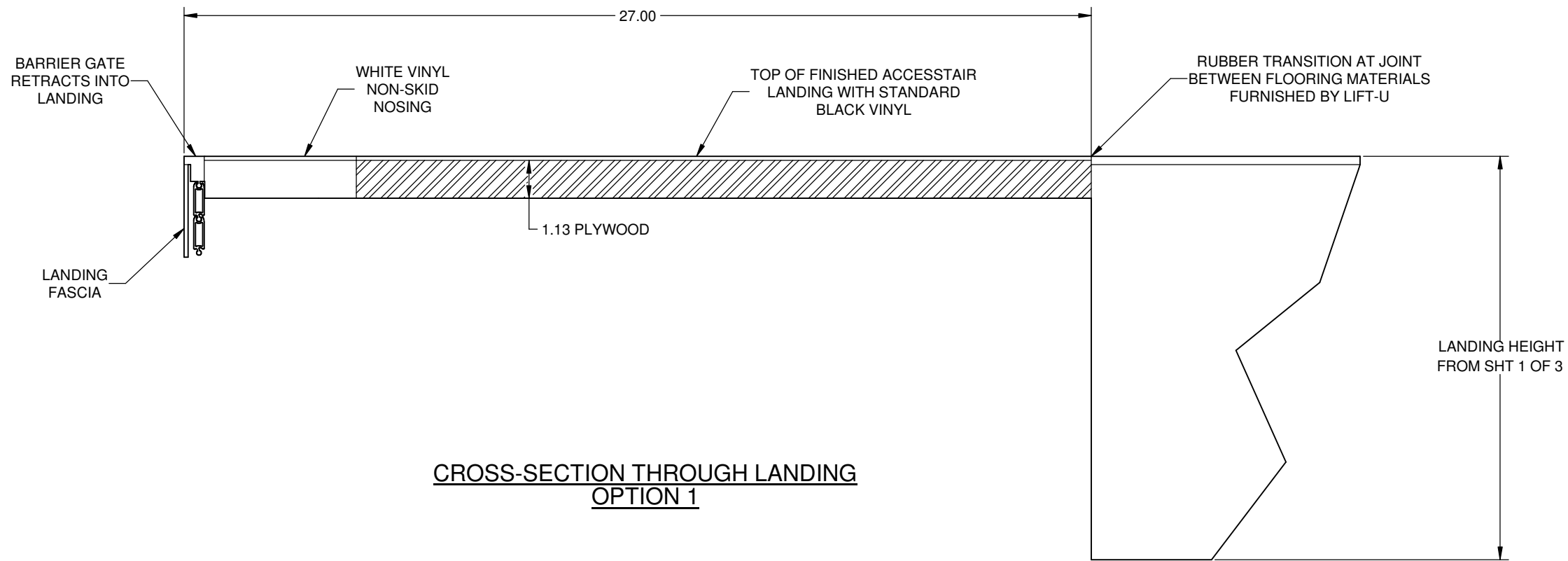
**LIFT-U**  
 P.O. BOX 398  
 ESCALON, CA. 95320  
 209-838-2400  
 A DIVISION OF  
**HOGAN MFG., INC.**  
THIS DOCUMENT IS AND CONTAINS CONFIDENTIAL TRADE SECRET INFORMATION OF THE COMPANY. NO PART OF IT MAY BE REPRODUCED, STORED IN A RETRIEVAL SYSTEM, OR TRANSMITTED IN ANY FORM OR BY ANY MEANS ELECTRONICALLY, PHOTOCOPIING, RECORDING OR OTHERWISE, WITHOUT THE PRIOR WRITTEN PERMISSION OF HOGAN MFG, INC. THIS DOCUMENT IS LOANED FOR THE LIMITED PURPOSES STATED HEREIN ONLY, AND REMAINS THE PROPERTY OF THE COMPANY.

TITLE		<b>LIFT CONFIGURATION</b>	
DOCUMENT NO.	VMH-08-30	SHEET NO.	1 OF 3
		REVISION	A

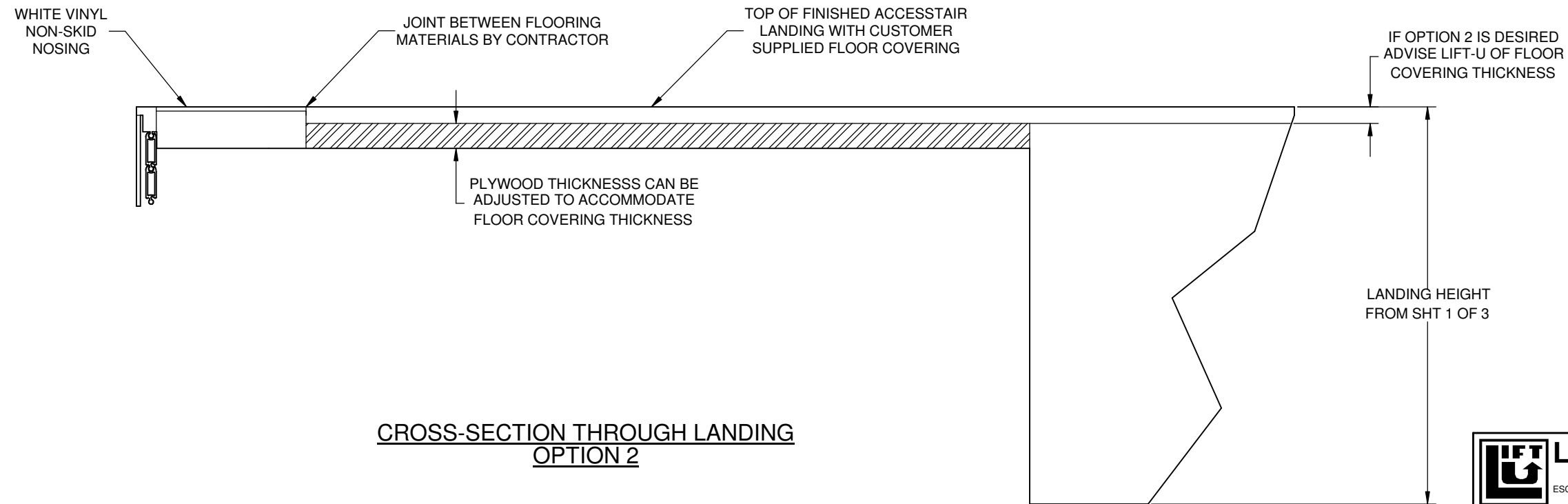
**DRAWING CERTIFICATION**

CUSTOMER:	
APPROVAL SIGNATURE:	
DATE:	
PROJECT NAME:	
PROJECT LOCATION:	
DRAWING REV:	A






CROSS-SECTION THROUGH LANDING  
OPTION 1



CROSS-SECTION THROUGH LANDING  
OPTION 2

 <b>LIFT-U</b> P.O. BOX 398 ESCALON, CA. 95320 209-838-2400	THIS DOCUMENT IS AND CONTAINS CONFIDENTIAL TRADE SECRET INFORMATION OF THE COMPANY. NO PART OF IT MAY BE REPRODUCED, STORED IN A RETRIEVAL SYSTEM, OR TRANSMITTED IN ANY FORM OR BY ANY MEANS ELECTRONICALLY, PHOTOCOPYING, RECORDING OR OTHERWISE, WITHOUT THE PRIOR WRITTEN PERMISSION OF HOGAN MFG., INC. THIS DOCUMENT IS LOANED FOR THE LIMITED PURPOSES STATED HEREIN ONLY, AND REMAINS THE PROPERTY OF THE COMPANY.	
	A DIVISION OF <b>HOGAN MFG., INC.</b>	
<b>TITLE</b> LIFT CONFIGURATION		
<b>DOCUMENT NO.</b> VMH-08-30	<b>SHEET NO.</b> 3 OF 3	<b>REVISION</b> A