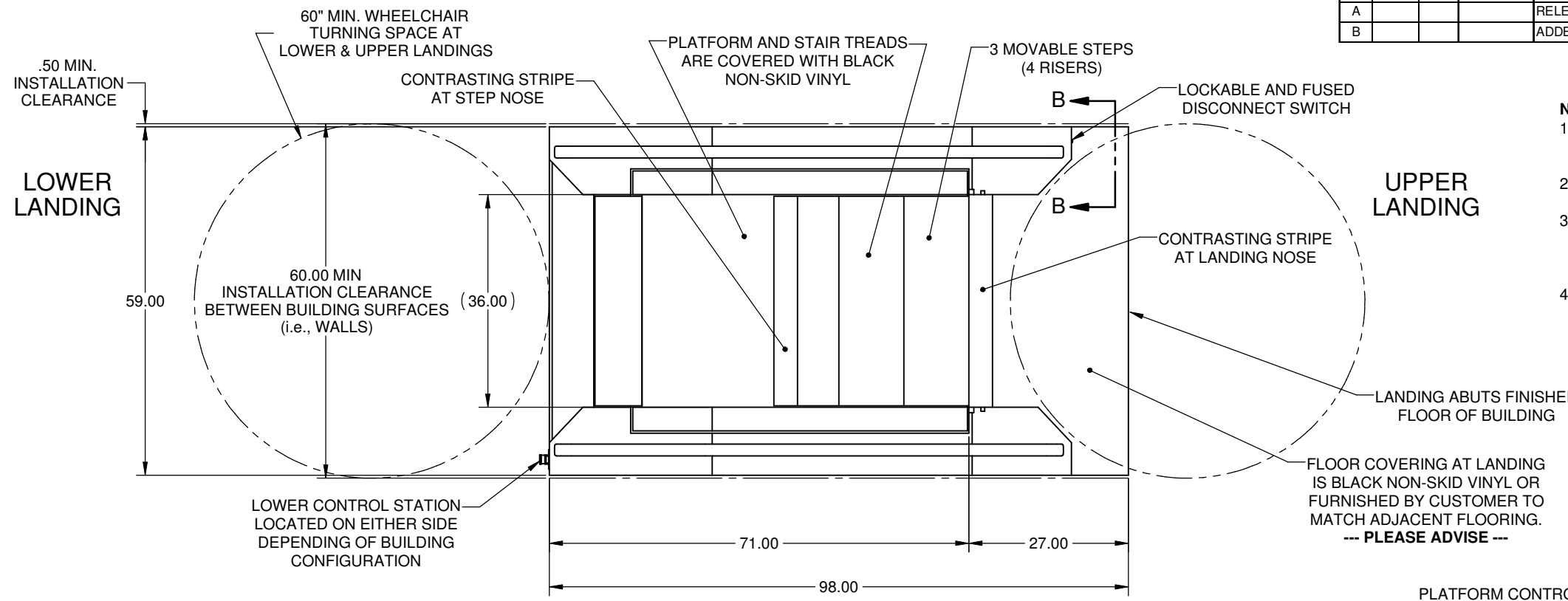
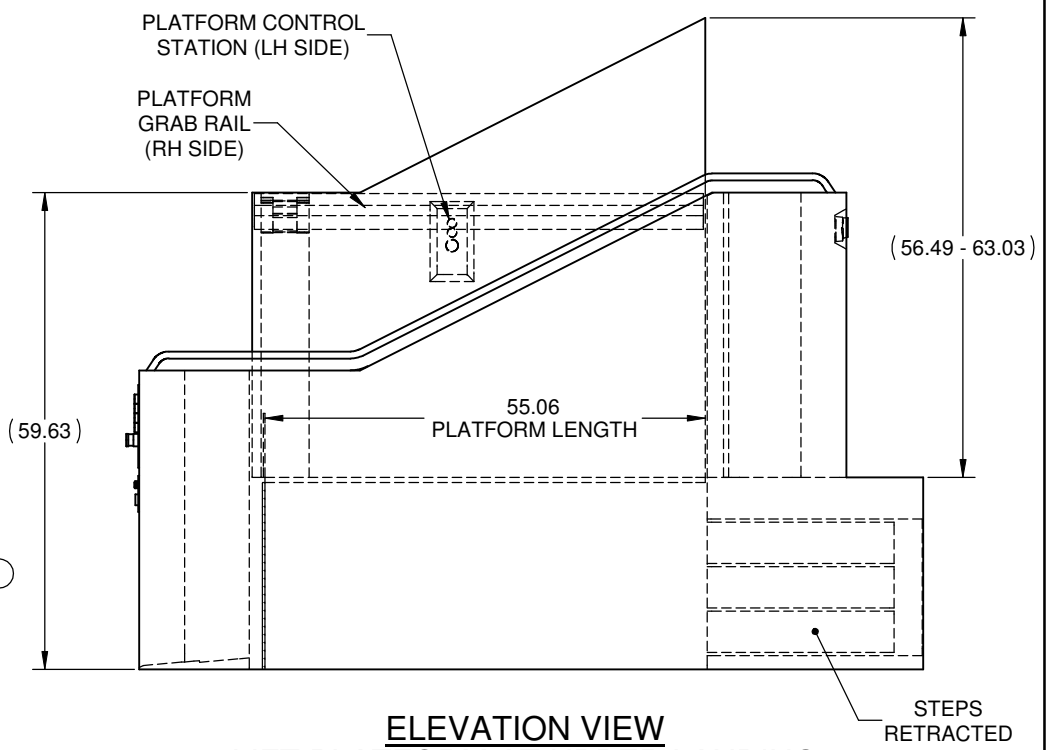
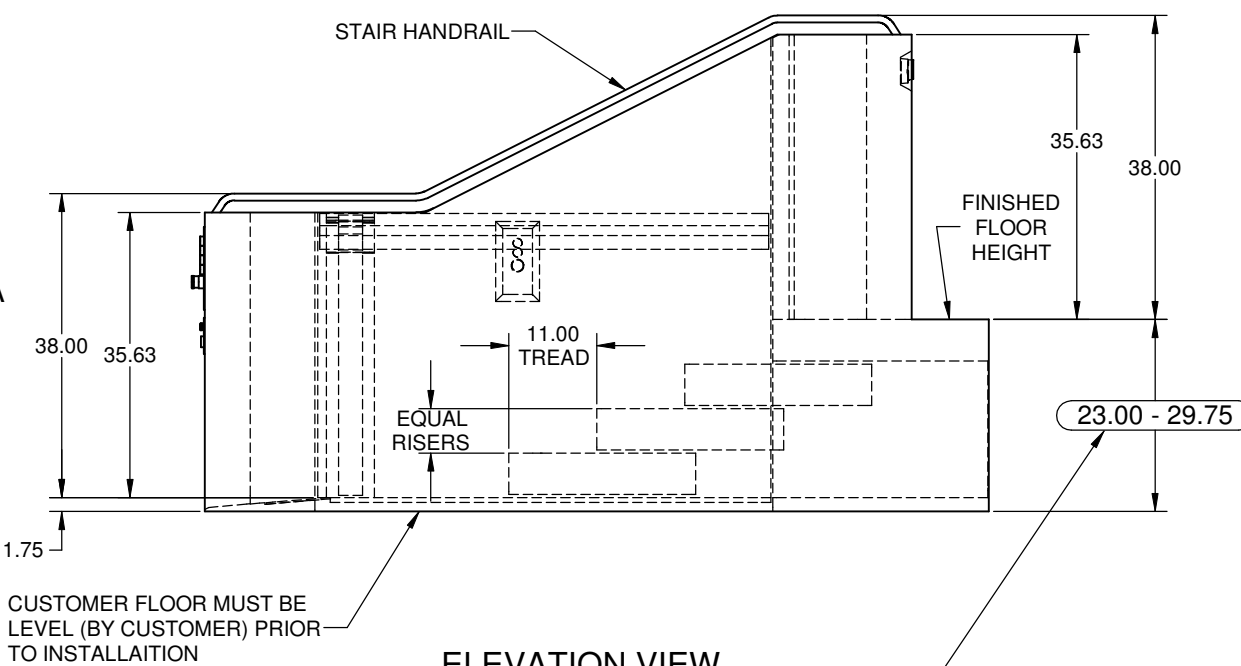
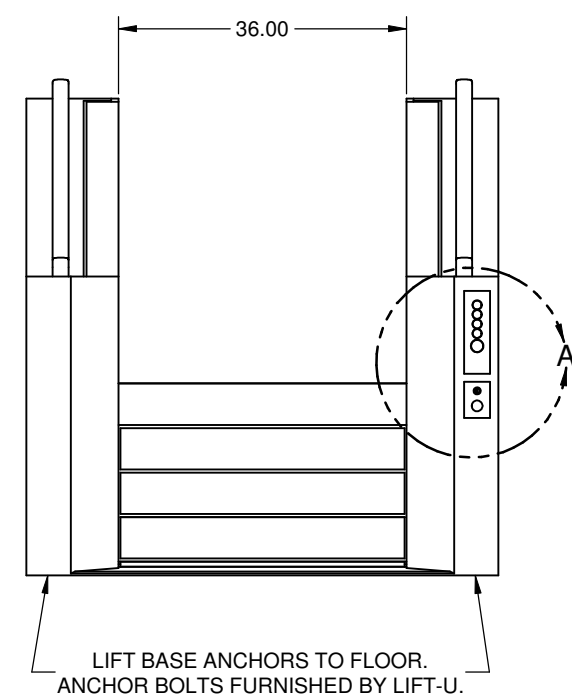


| REVISIONS |     |      |      |                                       |      |            |      |      |  |
|-----------|-----|------|------|---------------------------------------|------|------------|------|------|--|
| LTR       | ECO | APPD | DATE | DESCRIPTION                           | DFTR | DATE       | CHKR | DATE |  |
| A         |     |      |      | RELEASED                              | CAL  | 3/13/2009  |      |      |  |
| B         |     |      |      | ADDED 60" TURN SPACE, NOTES & SHEET 2 | BSA  | 10/18/2011 |      |      |  |



- NOTES:**
1. THIS DRAWING IS SUBJECT TO CHANGE PENDING APPLICABLE STATE AND LOCAL CODES, AND CUSTOMER APPROVAL.
  2. CUSTOMER MUST PROVIDE APPLICABLE STATE AND LOCAL CODES TO LIFT-U PRIOR TO DESIGN.
  3. DRAWING MUST BE SIGNED BY CUSTOMER AND RETURNED TO LIFT-U PRIOR TO PRODUCTION RELEASE. CUSTOMER APPROVAL SIGNIFIES THAT ALL DIMENSIONS ARE CORRECT TO THEIR SPECIFICATIONS.
  4. SEE SHEET 2 OF 3 FOR LIFT SPECIFICATIONS.



**APPROVAL NOTE:**  
**CONTRACTOR MUST VERIFY LANDING HEIGHT PRIOR TO RELEASE FOR FABRICATION. MEASUREMENT TO BE TAKEN FROM BASE FLOOR AT THE LOWER LANDING TO THE FINISH FLOOR AT THE UPPER LANDING.**

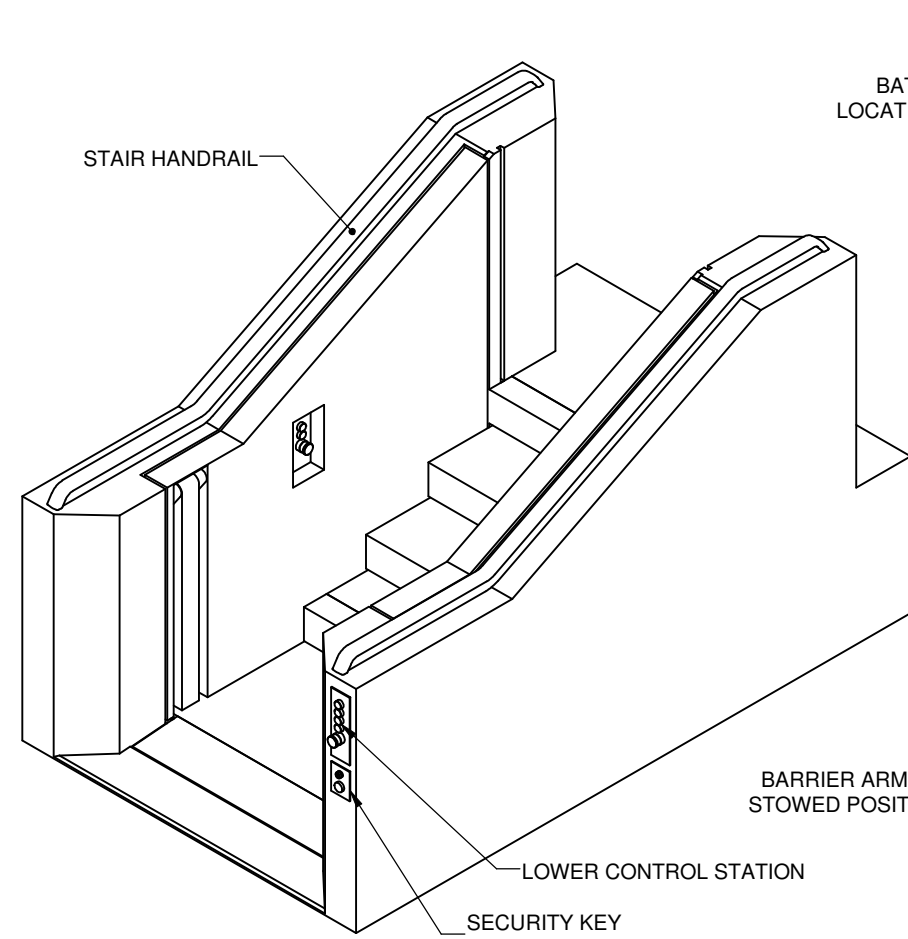
**LIFT-U**  
 P.O. BOX 398  
 ESCALON, CA. 95320  
 209-838-2400

A DIVISION OF  
**HOGAN MFG., INC.**

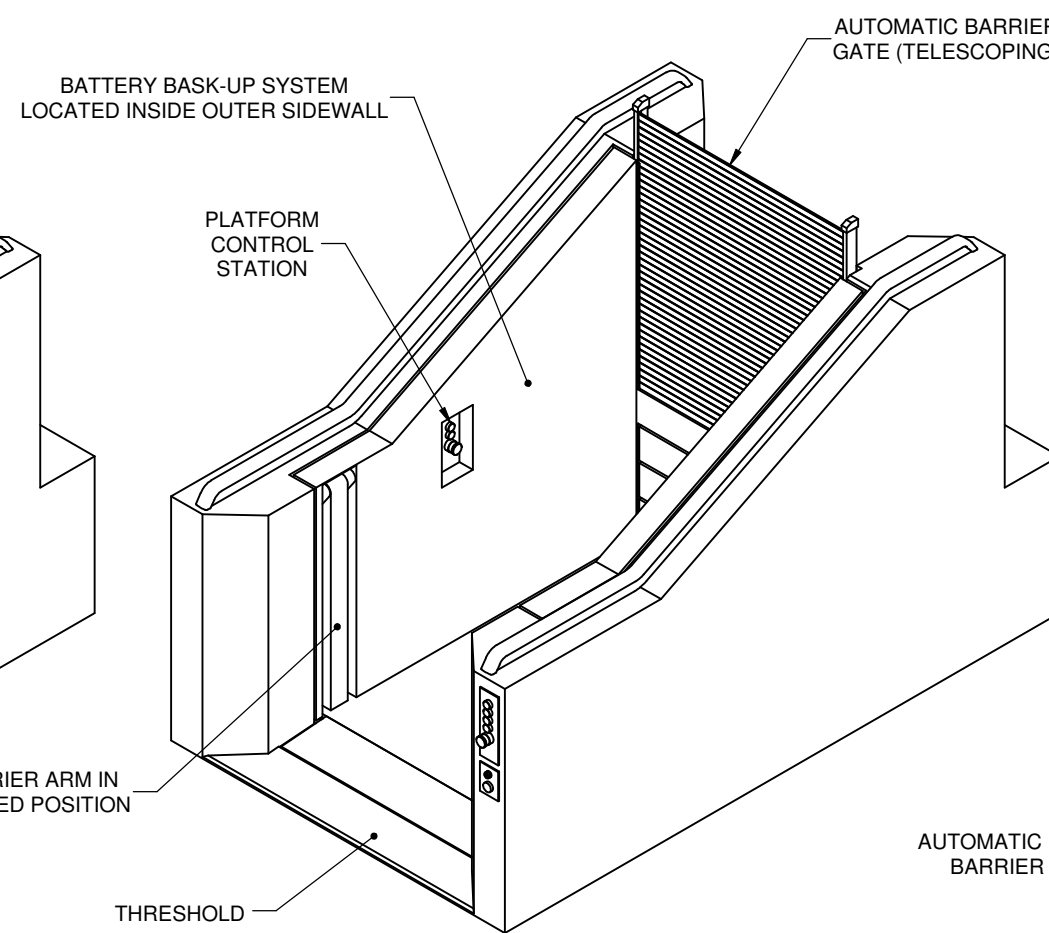
THIS DOCUMENT IS AND CONTAINS CONFIDENTIAL TRADE SECRET INFORMATION OF THE COMPANY. NO PART OF IT MAY BE REPRODUCED, STORED IN A RETRIEVAL SYSTEM, OR TRANSMITTED IN ANY FORM OR BY ANY MEANS ELECTRONICALLY, PHOTOCOPIING, RECORDING OR OTHERWISE, WITHOUT THE PRIOR WRITTEN PERMISSION OF HOGAN MFG, INC. THIS DOCUMENT IS LOANED FOR THE LIMITED PURPOSES STATED HEREIN ONLY, AND REMAINS THE PROPERTY OF THE COMPANY.

**TITLE** LIFT CONFIGURATION, 3-STEP

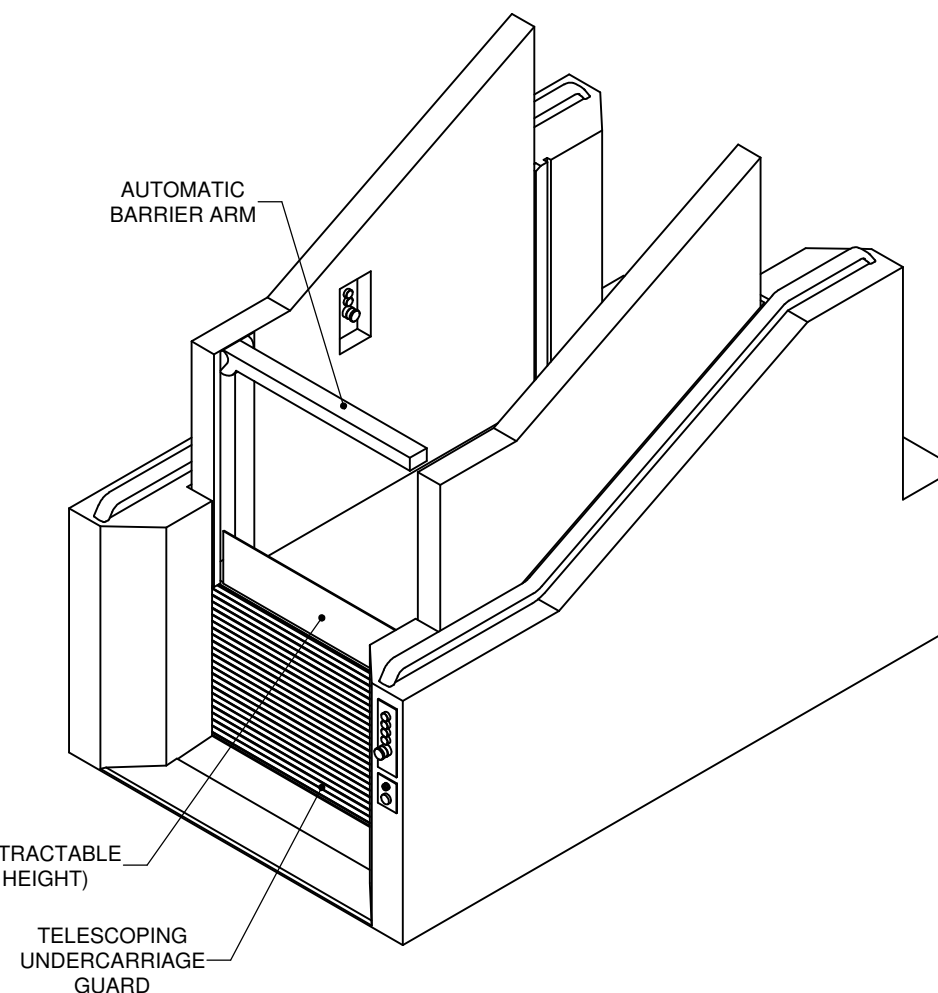
**DOCUMENT NO.** 910-0081 **SHEET NO.** 1 OF 2 **REVISION** B



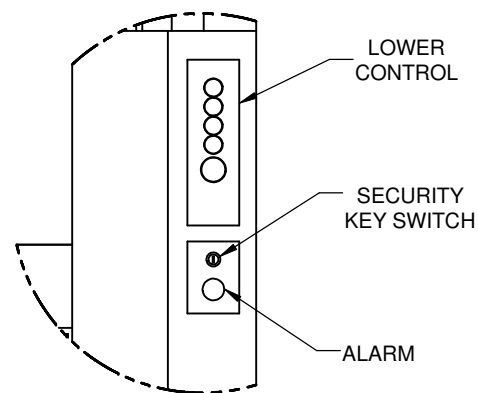
**STEPS CONFIGURATION**



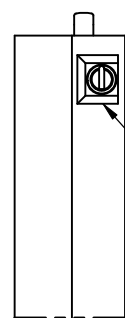
**STEPS RETRACTED  
READY FOR PASSENGER INGRESS OR EGRESS**



**LIFT PLATFORM AT UPPER LANDING  
READY FOR PASSENGER INGRESS OR EGRESS**

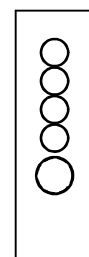


**DETAIL A**



**SECTION B-B  
VIEW ROTATED FOR CLARITY**

DISCONNECT SWITCH LOCATED AT UPPER LANDING. SEE DRAWING 910-0059 FOR J-BOX LOCATION AND PROVISIONS FOR SOURCE POWER.



**UPPER CONTROLS STATION**

REFERENCE ONLY

SEE DRAWING 910-0059 FOR MOUNTING INFORMATION



A DIVISION OF  
**HOGAN MFG., INC.**

THIS DOCUMENT IS AND CONTAINS CONFIDENTIAL TRADE SECRET INFORMATION OF THE COMPANY. NO PART OF IT MAY BE REPRODUCED, STORED IN A RETRIEVAL SYSTEM, OR TRANSMITTED IN ANY FORM OR BY ANY MEANS ELECTRONICALLY, PHOTOCOPIING, RECORDING OR OTHERWISE, WITHOUT THE PRIOR WRITTEN PERMISSION OF HOGAN MFG., INC. THIS DOCUMENT IS LOANED FOR THE LIMITED PURPOSES STATED HEREIN ONLY, AND REMAINS THE PROPERTY OF THE COMPANY.

**TITLE** LIFT CONFIGURATION, 3-STEP

**DOCUMENT NO.** 910-0081

**SHEET NO.** 2 OF 2

**REVISION** B