

THIS DRAWING ILLUSTRATES A LIFT PLATFORM AND OPERATING MECHANISM WITHIN THE PARAMETERS OF MILLWORK WALLS. THE LIFT PLATFORM REQUIRES 3/8" MINIMUM TO 3/4" MAXIMUM RUNNING CLEARANCE WITH ADJACENT MILLWORK FINISHED SURFACES. **THE MILLWORK SHOWN IS FOR ILLUSTRATIVE REFERENCE ONLY. DIMENSIONAL EXTENTS OF THE MILLWORK IS THE RESPONSIBILITY OF OTHERS.**

MILLWORK WALLS ARE SHOWN IN SHADED/TRANSPARENT MODE ON SHEET 1 TO VIEW ENCASED LIFT ASSEMBLY.

PLEASE REFER TO LIFT APPLICATION GUIDELINES (LIFT-U P/N 599-0013) FOR ADDITIONAL INFORMATION.

POWER NOTE:
BUILDING POWER TO BE SUPPLIED AND ROUTED TO ELECTRICAL CONTROL PANEL BY OTHERS. FURNISH 115 VAC, 3 WIRE, 15 AMP, SINGLE PHASE SOURCE POWER.

- ADVISORY NOTES:**
1. THIS DRAWING IS SUBJECT TO CHANGE PENDING APPLICABLE STATE AND LOCAL CODES, AND CUSTOMER APPROVAL.
 2. CUSTOMER MUST PROVIDE APPLICABLE STATE AND LOCAL CODES TO LIFT-U PRIOR TO DESIGN.
 3. PRIOR TO INSTALLATION, THE CUSTOMER MAY BE REQUIRED TO OBTAIN A VAIRANCE FROM THE PRESIDING AUTHORITY FOR NON-COMPLIANT FEATURES.
 4. DRAWING MUST BE SIGNED BY CUSTOMER AND RETURNED TO LIFT-U PRIOR TO PRODUCTION RELEASE. CUSTOMER APPROVAL SIGNIFIES THAT ALL DIMENSIONS ARE CORRECT TO THEIR SPECIFICATIONS.
 5. SEE SHEET 4 OF 4 FOR LIFT SPECIFICATIONS.

REFERENCE ONLY

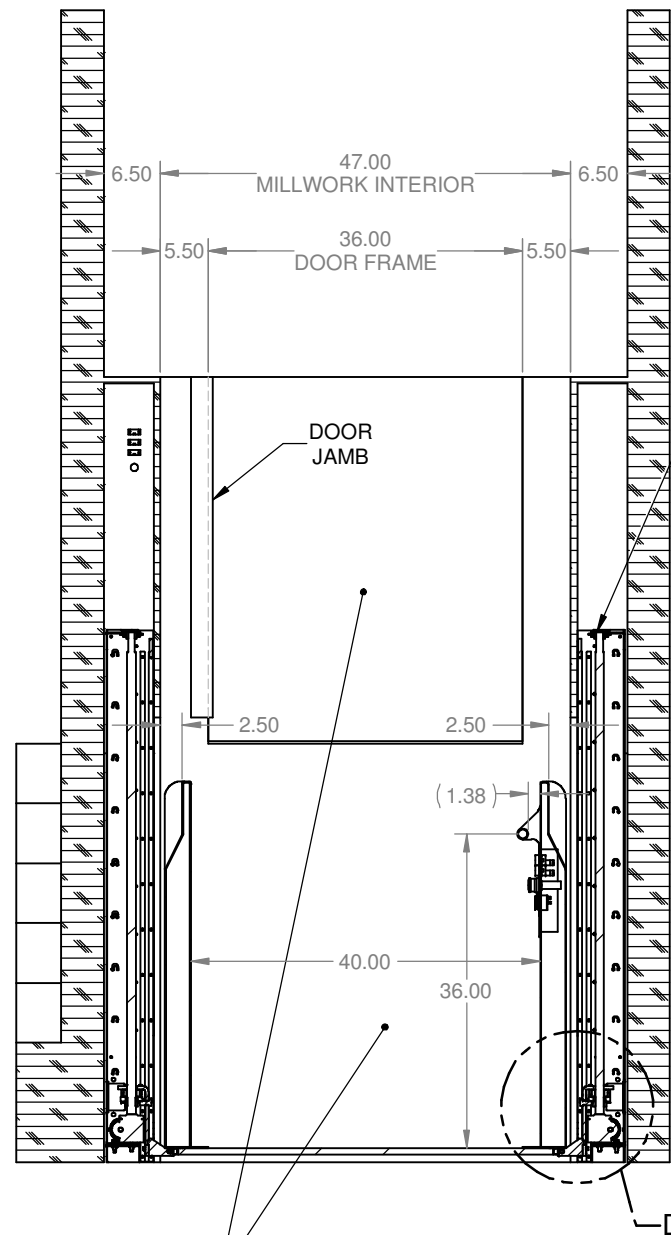
NOTES:

THIS DRAWING IS GENERIC AND PROVIDED TO ILLUSTRATE LIFT-U'S RECOMMENDED APL LIFT / MILLWORK INTERFACE.

THE DIMENSIONS AND DETAILS WILL VARY FOR EACH APPLICATION. THEREFORE, FOR EACH PROJECT APPLICATION REFER TO ITS CORRESPONDING LIFT CONFIGURATION DRAWING FOR GENERAL ARRANGEMENT LAYOUT AND LIFT ENVELOPE DIMENSIONS.

ALL MILLWORK FRAMING AND VENEERED PANEL FINISHES ENCASEING THE LIFT ARE FURNISHED AND INSTALLED BY OTHERS.

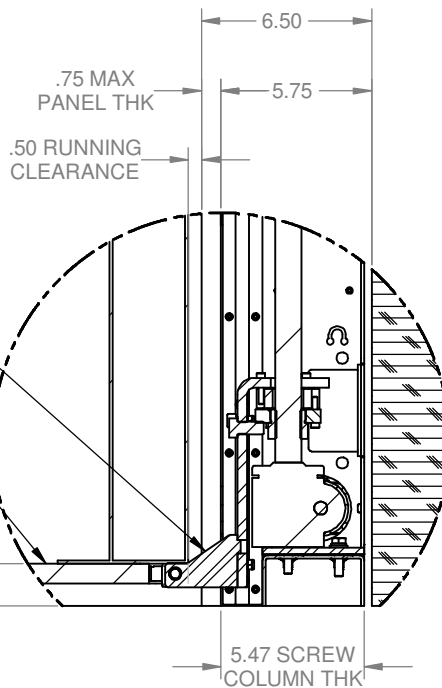
	LIFT-U P.O. BOX 398 ESCALON, CA. 95320 209-838-2400	THIS DOCUMENT IS AND CONTAINS CONFIDENTIAL TRADE SECRET INFORMATION OF THE COMPANY. NO PART OF IT MAY BE REPRODUCED, STORED IN A RETRIEVAL SYSTEM, OR TRANSMITTED IN ANY FORM OR BY ANY MEANS ELECTRONICALLY, PHOTOCOPYING, RECORDING OR OTHERWISE, WITHOUT THE PRIOR WRITTEN PERMISSION OF HOGAN MFG., INC. THIS DOCUMENT IS LOANED FOR THE LIMITED PURPOSES STATED HEREIN ONLY, AND REMAINS THE PROPERTY OF THE COMPANY.
	A DIVISION OF HOGAN MFG., INC.	
TITLE LIFT CONFIGURATION, 48" RISE		
DOCUMENT NO. 910-0097	SHEET NO. 1 OF 4	REVISION B



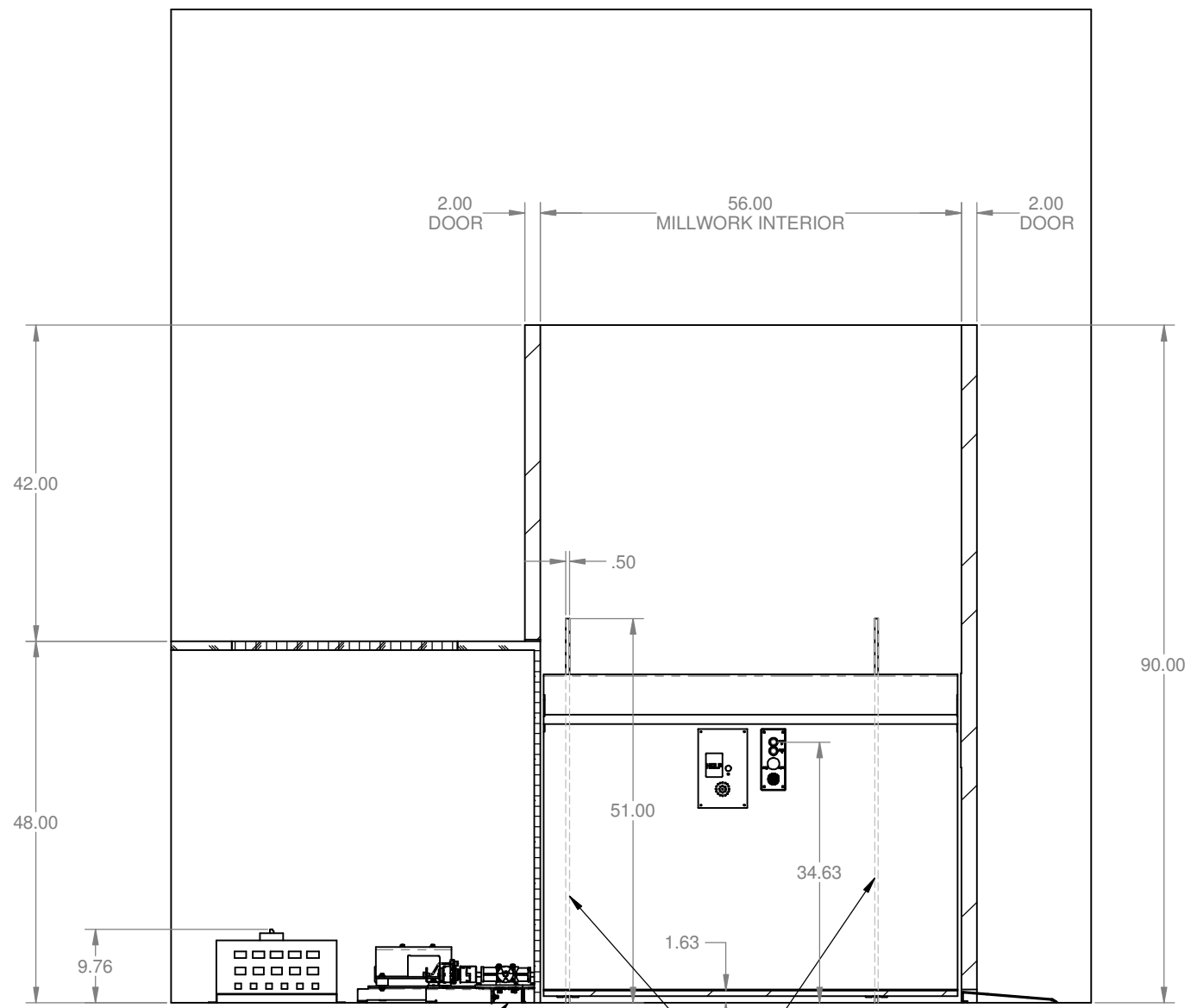
SECTION A-A

DOOR MUST CLOSE FLUSH WITH FASCIA BELOW UPPER LANDING SILL

LIFT SCREW JACK COLUMNS TO BE ENCASED IN MILLWORK. MILLWORK IS SUPPLIED AND INSTALLED BY OTHERS. SIDES FACING THE PLATFORM TO BE COMPLETED AFTER THE LIFT IS INSTALLED.



DETAIL D



SECTION B-B

FLOOR MUST BE LEVEL (BY OTHERS) PRIOR TO LIFT INSTALLATION

PROVIDE RELIEF CUTS IN VENEER PANELS TO ALLOW VERTICAL MOVEMENT OF THE LIFT PLATFORM SUPPORT BRACKETS

REFERENCE ONLY

NOTES:

THIS DRAWING IS GENERIC AND PROVIDED TO ILLUSTRATE LIFT-U'S RECOMMENDED APL LIFT / MILLWORK INTERFACE.

THE DIMENSIONS AND DETAILS WILL VARY FOR EACH APPLICATION. THEREFORE, FOR EACH PROJECT APPLICATION REFER TO ITS CORRESPONDING LIFT CONFIGURATION DRAWING FOR GENERAL ARRANGEMENT LAYOUT AND LIFT ENVELOPE DIMENSIONS.

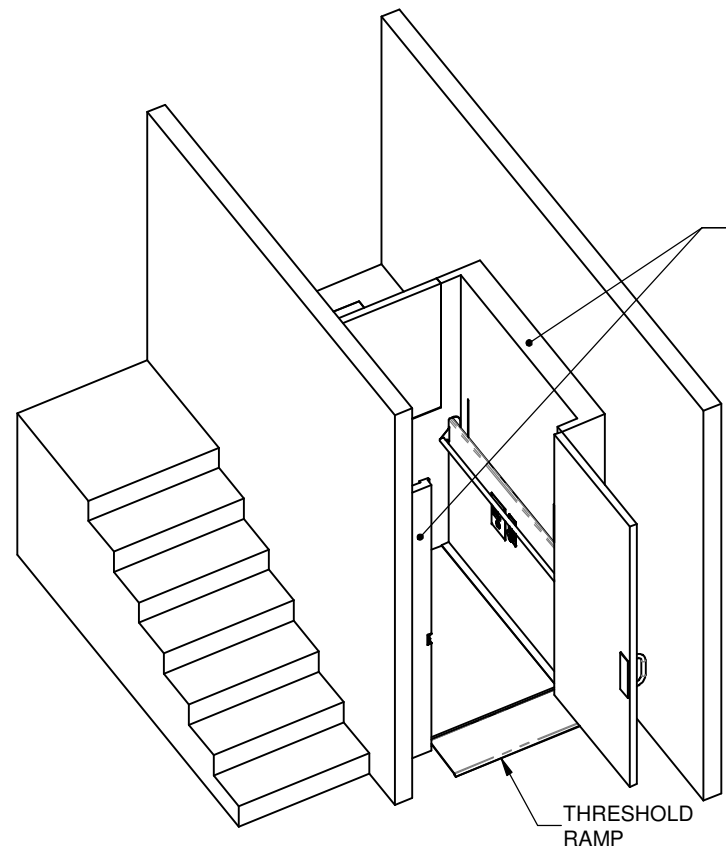
ALL MILLWORK FRAMING AND VENEERED PANEL FINISHES ENCASING THE LIFT ARE FURNISHED AND INSTALLED BY OTHERS.



LIFT-U
 P.O. BOX 398
 ESCALON, GA. 95320
 209-838-2400
 A DIVISION OF
HOGAN MFG., INC.

THIS DOCUMENT IS AND CONTAINS CONFIDENTIAL TRADE SECRET INFORMATION OF THE COMPANY. NO PART OF IT MAY BE REPRODUCED, STORED IN A RETRIEVAL SYSTEM, OR TRANSMITTED IN ANY FORM OR BY ANY MEANS ELECTRONICALLY, PHOTOCOPYING, RECORDING OR OTHERWISE, WITHOUT THE PRIOR WRITTEN PERMISSION OF HOGAN MFG, INC. THIS DOCUMENT IS LOANED FOR THE LIMITED PURPOSES STATED HEREIN ONLY, AND REMAINS THE PROPERTY OF THE COMPANY.

TITLE		LIFT CONFIGURATION, 48" RISE	
DOCUMENT NO.	910-0097	SHEET NO.	2 OF 4
		REVISION	B



PLATFORM SHOWN AT LOWER LEVEL (1)
READY FOR PASSENGER INGRESS OR EGRESS

ALL MILLWORK FRAMING AND VENEERED PANEL FINISHES ENCASING THE LIFT ARE FURNISHED AND INSTALLED BY OTHERS. BE ADVISED - ALL INTERIOR SURFACES MUST BE SMOOTH, i.e. NO PROTRUSIONS AND NO OPENINGS, OTHER THAN THOSE NECESSARY FOR THE OPERATION OF THE LIFT. INTERIOR PANELS SHOULD BE MADE REMOVABLE TO PROVIDE ACCESS TO LEVEL SWITCHES AND ENABLE SERVICE OR REPLACEMENT OF SCREW JACKS, GEARBOXES, AND DRIVE SHAFTS.

THRESHOLD RAMP

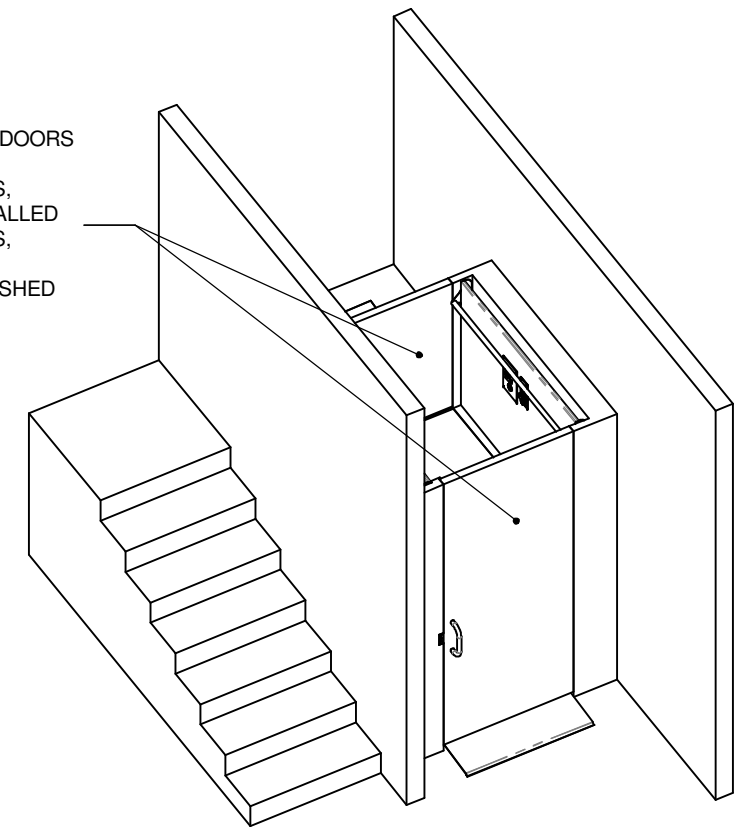
NOTES:

THIS DRAWING IS GENERIC AND PROVIDED TO ILLUSTRATE LIFT-U'S RECOMMENDED APL LIFT / MILLWORK INTERFACE.

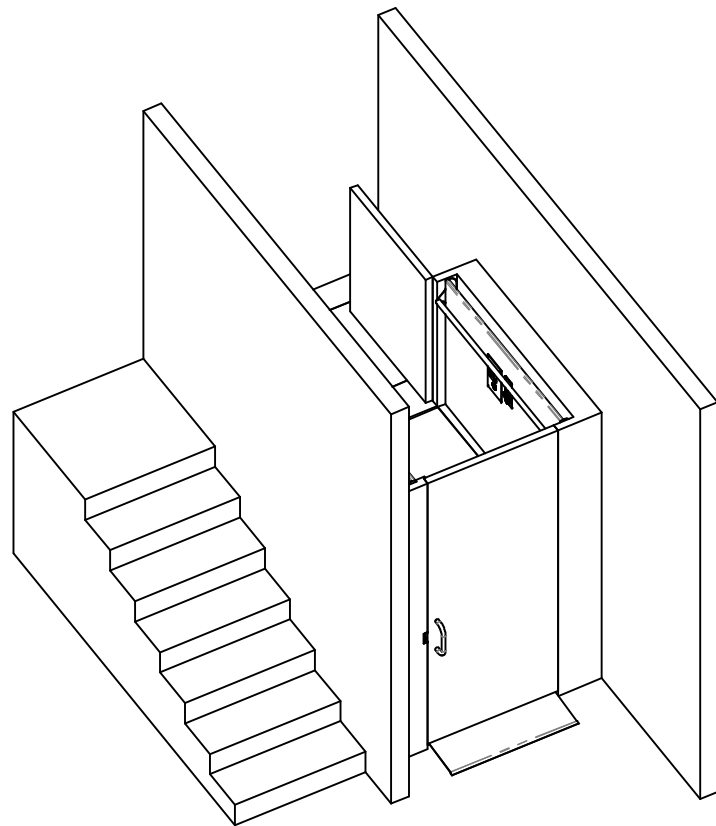
THE DIMENSIONS AND DETAILS WILL VARY FOR EACH APPLICATION. THEREFORE, FOR EACH PROJECT APPLICATION REFER TO ITS CORRESPONDING LIFT CONFIGURATION DRAWING FOR GENERAL ARRANGEMENT LAYOUT AND LIFT ENVELOPE DIMENSIONS.

ALL MILLWORK FRAMING AND VENEERED PANEL FINISHES ENCASING THE LIFT ARE FURNISHED AND INSTALLED BY OTHERS.

MANUALLY OPERATED, SELF-CLOSING DOORS i.e. w/SPRING HINGES. DOORS, SELF-CLOSING SPRING HINGES, AND JAMBS ARE FURNISHED AND INSTALLED BY OTHERS. ELECTRIC STRIKE LATCHES, SPRING-LOADED LATCH BOLTS, AND ELECTRICAL INTERLOCK WIRING FURNISHED BY LIFT-U AND INSTALLED BY OTHERS.



DOORS ARE CLOSED AND LOCKED WHEN PLATFORM RAISES AND LOWERS

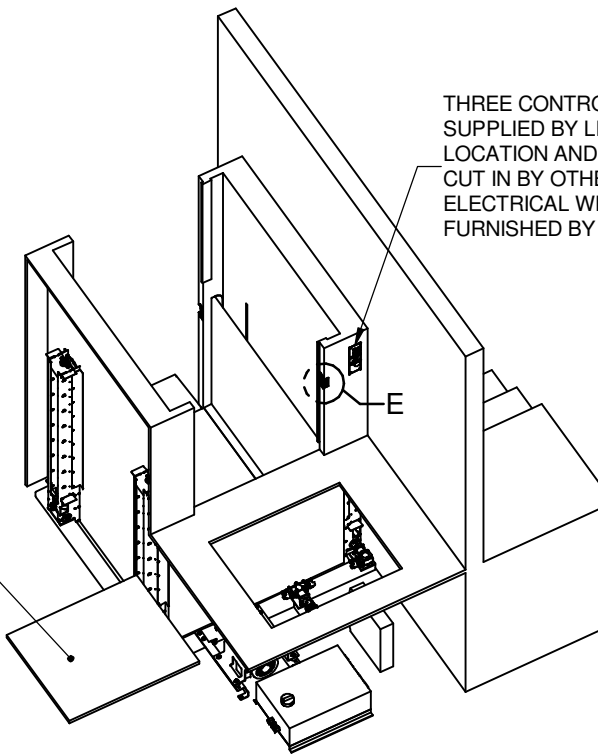


PLATFORM SHOWN AT UPPER LEVEL (2)
READY FOR PASSENGER INGRESS OR EGRESS

PROVIDE AN ACCESS HATCH TO ENABLE SERVICE ON MOTOR AND ELECTRONICS LOCATED BELOW UPPER LANDING. HATCH SHOULD BE NO LESS THAN 30" x 36". A REMOVABLE JOIST WITHIN THE FRAMED HATCH OPENING SHOULD BE POSITIONED TO REINFORCE THE HATCH COVER.

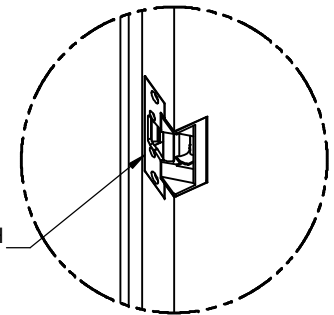
OR

POSSIBLE ALTERNATIVE IS TO INSTALL A PREFABRICATED FLOOR HATCH MODULE. RECOMMENDED UNIT IS A "TYPE-3" HATCH MADE BY "BILCO" OR APPROVED EQUAL. THIS UNIT IS ACCEPTS 1/8" THICK FLOORING. (SUPPLIED & INSTALLED BY OTHERS)



REVERSE ISOMETRIC VIEW
BACK WALL AND DOORS NOT SHOWN FOR CLARITY

THREE CONTROL STATIONS SUPPLIED BY LIFT-U. LOCATION AND WALL CUT IN BY OTHERS. ELECTRICAL WIRING FURNISHED BY LIFT-U.



ELECTRIC STRIKE LATCH CUT INTO DOOR JAMB

DETAIL E
TYPICAL 2 PLACES

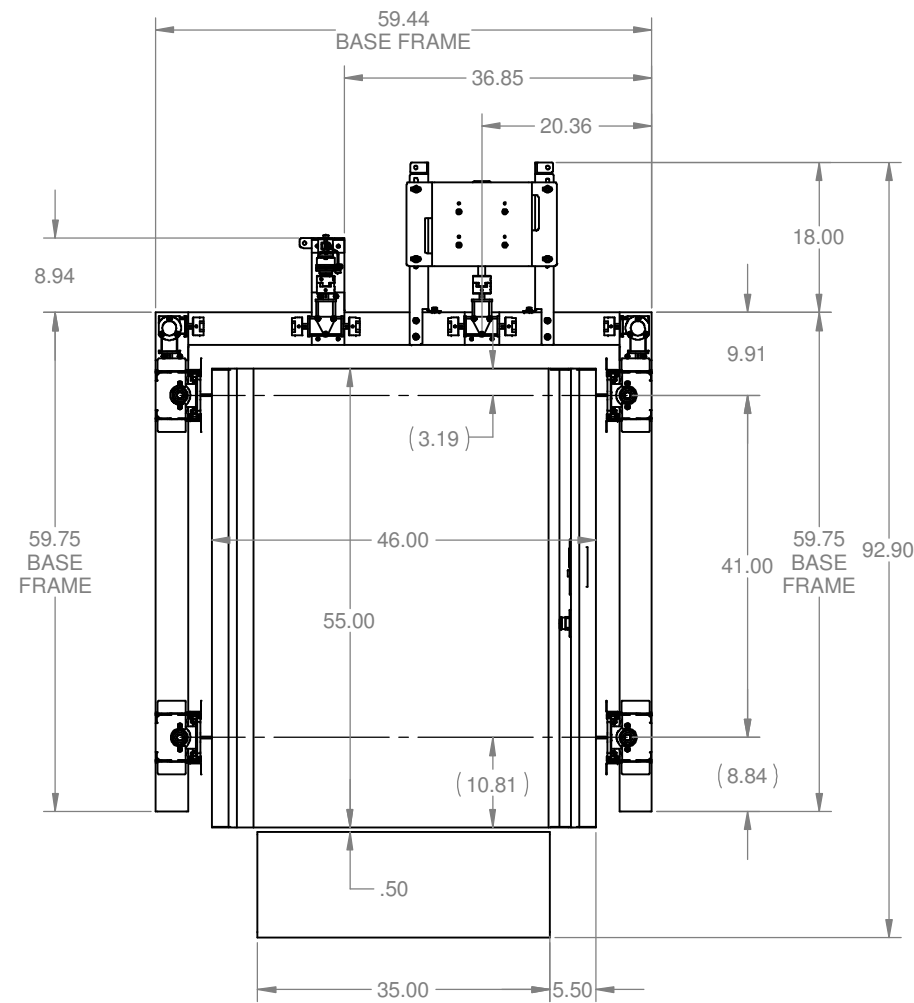
REFERENCE ONLY



A DIVISION OF
HOGAN MFG., INC.

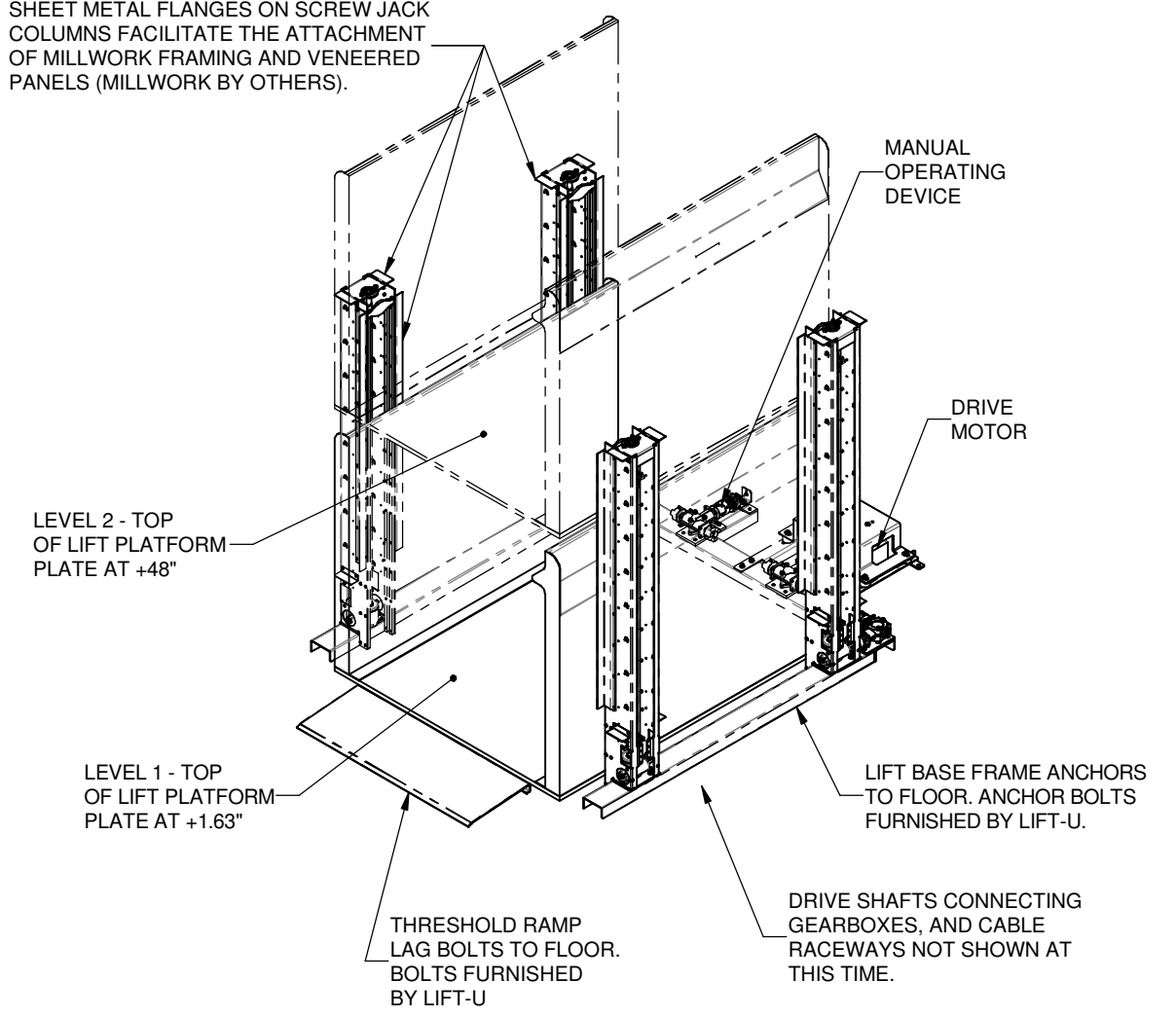
THIS DOCUMENT IS AND CONTAINS CONFIDENTIAL TRADE SECRET INFORMATION OF THE COMPANY. NO PART OF IT MAY BE REPRODUCED, STORED IN A RETRIEVAL SYSTEM, OR TRANSMITTED IN ANY FORM OR BY ANY MEANS ELECTRONICALLY, PHOTOCOPIING, RECORDING OR OTHERWISE, WITHOUT THE PRIOR WRITTEN PERMISSION OF HOGAN MFG., INC. THIS DOCUMENT IS LOANED FOR THE LIMITED PURPOSES STATED HEREIN ONLY, AND REMAINS THE PROPERTY OF THE COMPANY.

TITLE	LIFT CONFIGURATION, 48" RISE		
DOCUMENT NO.	910-0097	SHEET NO.	3 OF 4
		REVISION	B

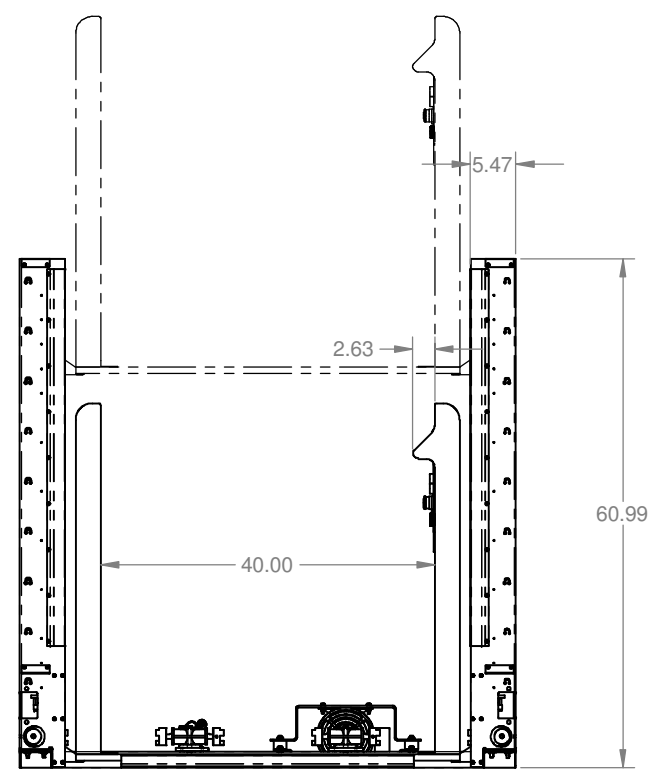


REFERENCE ONLY

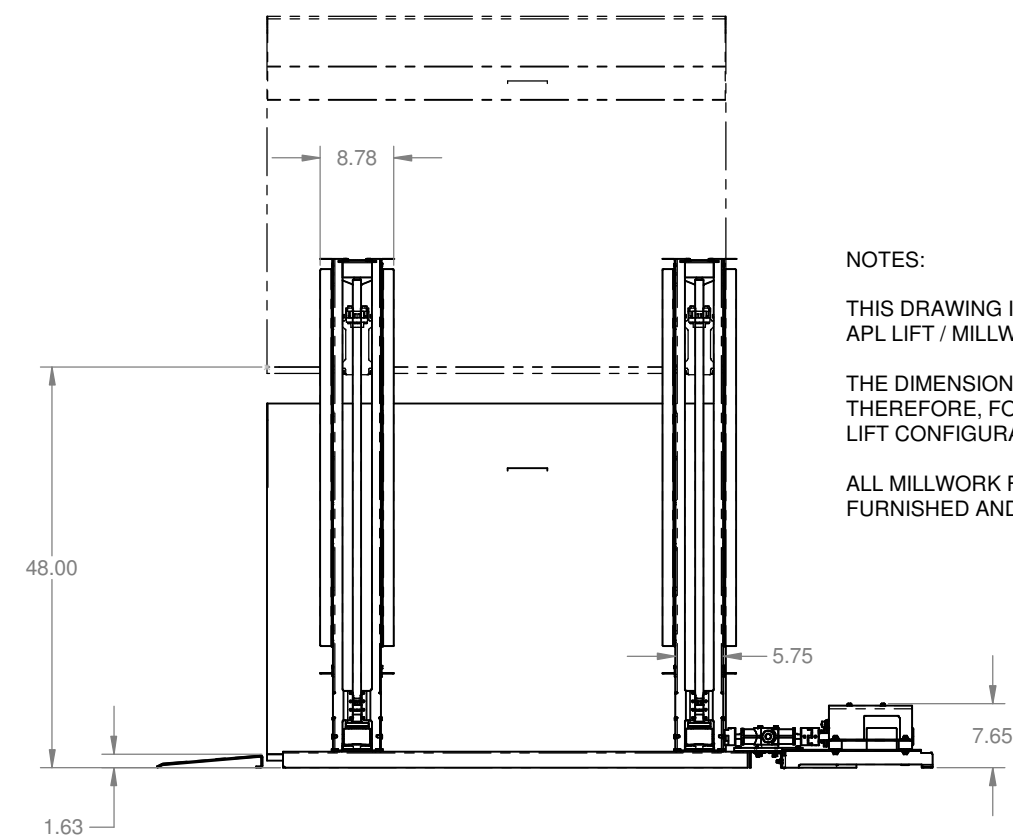
SHEET METAL FLANGES ON SCREW JACK COLUMNS FACILITATE THE ATTACHMENT OF MILLWORK FRAMING AND VENEERED PANELS (MILLWORK BY OTHERS).



ISOMETRIC VIEW



LIFT ENVELOPE DIMENSIONS




NOTES:

THIS DRAWING IS GENERIC AND PROVIDED TO ILLUSTRATE LIFT-U'S RECOMMENDED APL LIFT / MILLWORK INTERFACE.

THE DIMENSIONS AND DETAILS WILL VARY FOR EACH APPLICATION. THEREFORE, FOR EACH PROJECT APPLICATION REFER TO ITS CORRESPONDING LIFT CONFIGURATION DRAWING FOR GENERAL ARRANGEMENT LAYOUT AND LIFT ENVELOPE DIMENSIONS.

ALL MILLWORK FRAMING AND VENEERED PANEL FINISHES ENCASING THE LIFT ARE FURNISHED AND INSTALLED BY OTHERS.

 LIFT-U P.O. BOX 398 ESCALON, CA. 95320 209-838-2400	THIS DOCUMENT IS AND CONTAINS CONFIDENTIAL TRADE SECRET INFORMATION OF THE COMPANY. NO PART OF IT MAY BE REPRODUCED, STORED IN A RETRIEVAL SYSTEM, OR TRANSMITTED IN ANY FORM OR BY ANY MEANS ELECTRONICALLY, PHOTOCOPIING, RECORDING OR OTHERWISE, WITHOUT THE PRIOR WRITTEN PERMISSION OF HOGAN MFG., INC. THIS DOCUMENT IS LOANED FOR THE LIMITED PURPOSES STATED HEREIN ONLY, AND REMAINS THE PROPERTY OF THE COMPANY.		
	A DIVISION OF HOGAN MFG., INC.		
TITLE LIFT CONFIGURATION, 48" RISE			
DOCUMENT NO. 910-0097		SHEET NO. 4 OF 4	REVISION B